

For Research Use Only

DUSP6 Recombinant antibody, PBS Only

Catalog Number: 83356-5-PBS



Basic Information

Catalog Number:

83356-5-PBS

Size:

1 mg/ml

Source:

Rabbit

Isotype:

IgG

Immunogen Catalog Number:

AG23474

GenBank Accession Number:

BC003562

GeneID (NCBI):

1848

UNIPROT ID:

Q16828

Full Name:

dual specificity phosphatase 6

Calculated MW:

42 kDa

Observed MW:

42-45 kDa

Purification Method:

Protein A purification

CloneNo.:

240295C8

Applications

Tested Applications:

WB, ELISA

Species Specificity:

human, mouse, rat

Background Information

Dual specificity phosphatase 6 (DUSP6) is a member of the family of mitogen-activated protein kinase (MAPK) phosphatases, which dephosphorylate and inactivate MAPK (PMID: 9858808). The MAPK pathway is an important signal transduction system that serves cellular processes, such as proliferation, differentiation, migration, and apoptosis. DUSP6 resides at chromosome location 12q22-23, which is one of the candidate loci for susceptibility to bipolar disorder and which encodes a phosphatase selective for extracellular signal-regulated kinase (ERK) (PMID: 9205128). DUSP6 inactivates extracellular signal-regulated kinase (ERK), and can act in tumor suppressive pathways, whose expression is reduced in several different types of cancer. (PMID: 21680106).

Storage

Storage:

Store at -80°C.

The product is shipped with ice packs. Upon receipt, store it immediately at -80°C

Storage Buffer:

PBS Only

For technical support and original validation data for this product please contact:

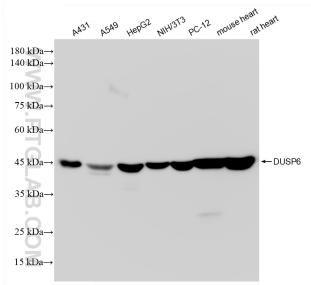
T: 4006900926

E: Proteintech-CN@ptglab.com

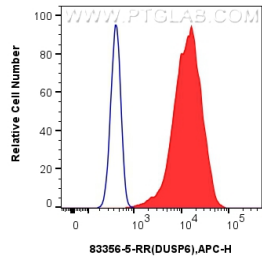
W: ptgcn.com

This product is exclusively available under Proteintech Group brand and is not available to purchase from any other manufacturer.

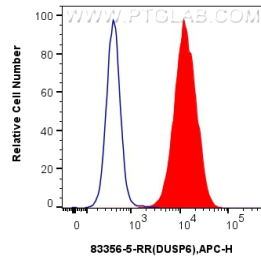
Selected Validation Data



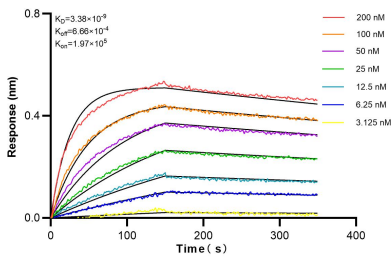
Various lysates were subjected to SDS PAGE followed by western blot with 83356-5-RR (DUSP6 antibody) at dilution of 1:10000 incubated at room temperature for 1.5 hours. This data was developed using the same antibody clone with 83356-5-PBS in a different storage buffer formulation.



1x10⁶ HeLa cells were intracellularly stained with 0.25 ug DUSP6 Recombinant antibody (83356-5-RR, Clone:240295C8) (red) or Isotype Control (blue) and APC-Conjugated AffiniPure Goat Anti-Rabbit IgG(H+L). Cells were fixed with 4% PFA and permeabilized with Flow Cytometry Perm Buffer (PF00011-C). This data was developed using the same antibody clone with 83356-5-PBS in a different storage buffer formulation.



1x10⁶ PC-12 cells were intracellularly stained with 0.25 ug DUSP6 Recombinant antibody (83356-5-RR, Clone:240295C8) (red) or Isotype Control (blue) and APC-Conjugated AffiniPure Goat Anti-Rabbit IgG(H+L). Cells were fixed with 4% PFA and permeabilized with Flow Cytometry Perm Buffer (PF00011-C). This data was developed using the same antibody clone with 83356-5-PBS in a different storage buffer formulation.



Biolayer interferometry (BLI) kinetic assays of 83356-5-RR against Human DUSP6 were performed. The affinity constant is 3.38 nM.