

For Research Use Only

DUSP6 Recombinant antibody

Catalog Number: 83355-3-RR



Basic Information

Catalog Number:	83355-3-RR	GenBank Accession Number:	BC003562	Purification Method:	Protein A purification
Size:	1000 ug/ml	GeneID (NCBI):	1848	CloneNo.:	240303A9
Source:	Rabbit	UNIPROT ID:	Q16828		
Isotype:	IgG	Full Name:	dual specificity phosphatase 6		
Immunogen Catalog Number:	AG0705	Calculated MW:	42 kDa		

Applications

Tested Applications:
FC (Intra), ELISA
Species Specificity:
human

Background Information

Dual specificity phosphatase 6 (DUSP6) is a member of the family of mitogen-activated protein kinase (MAPK) phosphatases, which dephosphorylate and inactivate MAPK (PMID: 9858808). The MAPK pathway is an important signal transduction system that serves cellular processes, such as proliferation, differentiation, migration, and apoptosis. DUSP6 resides at chromosome location 12q22-23, which is one of the candidate loci for susceptibility to bipolar disorder and which encodes a phosphatase selective for extracellular signal-regulated kinase (ERK) (PMID: 9205128). DUSP6 inactivates extracellular signal-regulated kinase (ERK), and can act in tumor suppressive pathways, whose expression is reduced in several different types of cancer. (PMID: 21680106).

Storage

Storage:
Store at -20°C. Stable for one year after shipment.
Storage Buffer:
PBS with 0.02% sodium azide and 50% glycerol pH 7.3.
Aliquoting is unnecessary for -20°C storage

For technical support and original validation data for this product please contact:

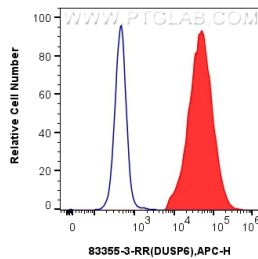
T: 4006900926

E: Proteintech-CN@ptglab.com

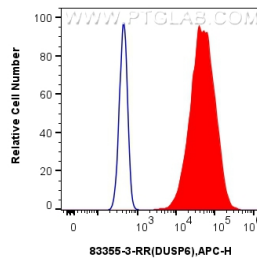
W: ptgcn.com

This product is exclusively available under Proteintech Group brand and is not available to purchase from any other manufacturer.

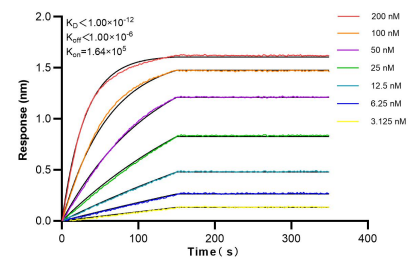
Selected Validation Data



1×10^6 PC-12 cells were intracellularly stained with 0.25 μ g Dusp6 Recombinant Antibody (83355-3-RR, Clone:240303A9) (red) or Isotype Control (blue) and APC-Conjugated AffiniPure Goat Anti-Rabbit IgG(H+L). Cells were fixed with 4% PFA and permeabilized with Flow Cytometry Perm Buffer (PF00011-C).



1×10^6 HeLa cells were intracellularly stained with 0.25 μ g Dusp6 Recombinant Antibody (83355-3-RR, Clone:240303A9) (red) or Isotype Control (blue) and APC-Conjugated AffiniPure Goat Anti-Rabbit IgG(H+L). Cells were fixed with 4% PFA and permeabilized with Flow Cytometry Perm Buffer (PF00011-C).



Biolayer interferometry (BLI) kinetic assays of 83355-3-RR against Human DUSP6 were performed. The affinity constant is below 1 pM.