

For Research Use Only

# DUSP6 Recombinant monoclonal antibody, PBS Only (Capture)

Catalog Number: 83355-3-PBS



## Basic Information

Catalog Number:	83355-3-PBS	GenBank Accession Number:	BC003562	Purification Method:	Protein A purification
Source:	Rabbit	GeneID (NCBI):	1848	CloneNo.:	240303A9
Isotype:	IgG	UNIPROT ID:	Q16828		
Immunogen Catalog Number:	AG0705	Full Name:	dual specificity phosphatase 6		
		Calculated MW:	42 kDa		

## Applications

**Tested Applications:**  
FC (Intra), Cytometric bead array, Indirect ELISA

**Species Specificity:**  
human

## Background Information

Dual specificity phosphatase 6 (DUSP6) is a member of the family of mitogen-activated protein kinase (MAPK) phosphatases, which dephosphorylate and inactivate MAPK (PMID: 9858808). The MAPK pathway is an important signal transduction system that serves cellular processes, such as proliferation, differentiation, migration, and apoptosis. DUSP6 resides at chromosome location 12q22-23, which is one of the candidate loci for susceptibility to bipolar disorder and which encodes a phosphatase selective for extracellular signal-regulated kinase (ERK) (PMID: 9205128). DUSP6 inactivates extracellular signal-regulated kinase (ERK), and can act in tumor suppressive pathways, whose expression is reduced in several different types of cancer. (PMID: 21680106).

## Storage

**Storage:**  
Store at -80°C.  
**The product is shipped with ice packs. Upon receipt, store it immediately at -80°C**

**Storage Buffer:**  
PBS only, pH7.3

For technical support and original validation data for this product please contact:

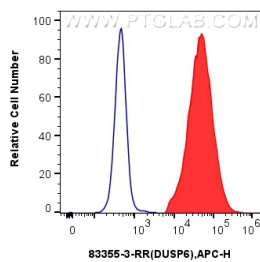
T: 4006900926

E: [Proteintech-CN@ptglab.com](mailto:Proteintech-CN@ptglab.com)

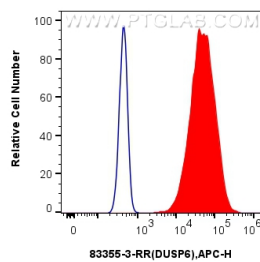
W: [ptgcn.com](http://ptgcn.com)

**This product is exclusively available under Proteintech Group brand and is not available to purchase from any other manufacturer.**

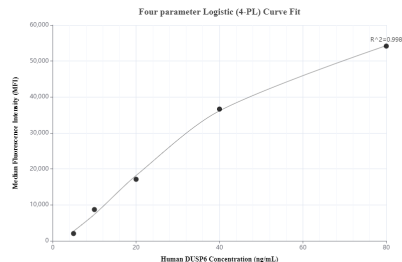
Selected Validation Data



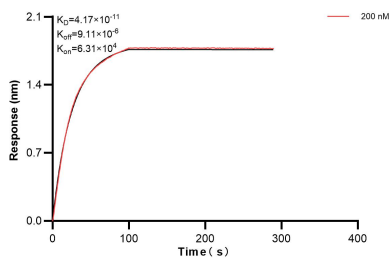
1x10<sup>6</sup> PC-12 cells were intracellularly stained with 0.25 ug Dusp6 Recombinant Antibody (83355-3-RR, Clone:240303A9) (red) or Isotype Control (blue) and APC-Conjugated AffiniPure Goat Anti-Rabbit IgG(H+L). Cells were fixed with 4% PFA and permeabilized with Flow Cytometry Perm Buffer. This data was developed using the same antibody clone with 83355-3-PBS in a different storage buffer formulation.



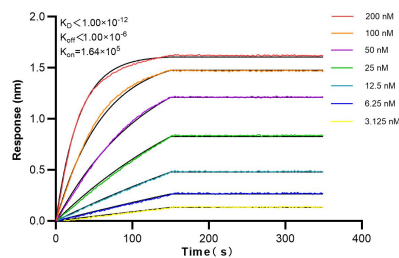
1x10<sup>6</sup> HeLa cells were intracellularly stained with 0.25 ug Dusp6 Recombinant Antibody (83355-3-RR, Clone:240303A9) (red) or Isotype Control (blue) and APC-Conjugated AffiniPure Goat Anti-Rabbit IgG(H+L). Cells were fixed with 4% PFA and permeabilized with Flow Cytometry Perm Buffer. This data was developed using the same antibody clone with 83355-3-PBS in a different storage buffer formulation.



Cytometric bead array standard curve of MP00391-2, DUSP6 Recombinant Matched Antibody Pair, PBS Only. Capture antibody: 83355-3-PBS. Detection antibody: 83355-4-PBS. Standard: Ag0705. Range: 5-80ng/mL.



Biolayer interferometry (BLI) kinetic assay of 83355-3-PBS against Human DUSP6 was performed. The affinity constant is 41.7 pM.



Biolayer interferometry (BLI) kinetic assays of 83355-3-RR against Human DUSP6 were performed. The affinity constant is below 1 pM.