

For Research Use Only

IGFBP1 Recombinant antibody, PBS Only (Detector)

Catalog Number: 83347-4-PBS



Basic Information

Catalog Number:

83347-4-PBS

Size:

1 mg/ml

Source:

Rabbit

Isotype:

IgG

GenBank Accession Number:

NM_000596.4

GeneID (NCBI):

3484

UNIPROT ID:

P08833

Full Name:

IGF binding protein 1

Calculated MW:

28 kDa

Purification Method:

Protein A purification

CloneNo.:

240263H8

Applications

Tested Applications:

Cytometric bead array, Sandwich ELISA, Indirect ELISA, Sample test

Species Specificity:

human

Background Information

Storage

Storage:

Store at -80°C.

The product is shipped with ice packs. Upon receipt, store it immediately at -80°C

Storage Buffer:

PBS Only

For technical support and original validation data for this product please contact:

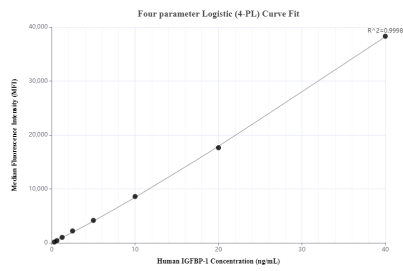
T: 4006900926

E: Proteintech-CN@ptglab.com

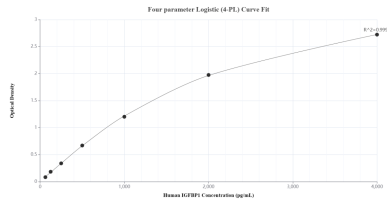
W: ptgcn.com

This product is exclusively available under Proteintech Group brand and is not available to purchase from any other manufacturer.

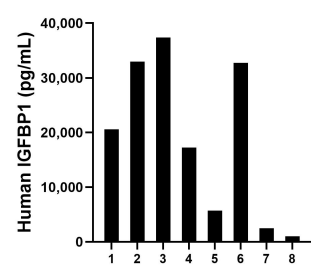
Selected Validation Data



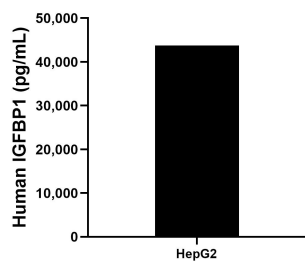
Cytometric bead array standard curve of MP00355-3, IGFBP1 Recombinant Matched Antibody Pair, PBS Only. Capture antibody: 83347-2-PBS. Detection antibody: 83347-4-PBS. Standard: Eg0951. Range: 0.313-40 ng/mL



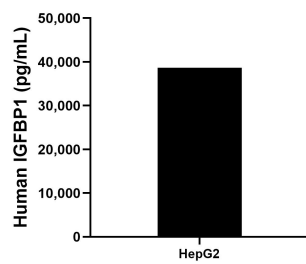
Sandwich ELISA standard curve of MP00355-3, Human IGFBP1 Recombinant Matched Antibody Pair - PBS only. 83347-2-PBS was coated to a plate as the capture antibody and incubated with serial dilutions of standard Eg0951. 83347-4-PBS was HRP conjugated as the detection antibody. Range: 62.5-4000 pg/mL



Serum of eight individual healthy human donors was measured. The IGFBP1 concentration of detected samples was determined to be 18,764.2 pg/mL with a range of 1,025.1 - 37,369.6 pg/mL



HepG2 cells were cultured in DMEM supplemented with 10% fetal bovine serum, 2.5 mM L-glutamine, 100 U/mL penicillin, and 100 µg/mL streptomycin sulfate. An aliquot of the cell culture supernate was removed, assayed for human IGFBP1, and measured 43,726.4 pg/mL



The mean IGFBP1 concentration was determined to be 38,698.4 pg/mL in HepG2 cell extract based on a 1.5 mg/mL extract load.