

For Research Use Only

# IGFBP1 Recombinant antibody, PBS Only (Capture)

Catalog Number: 83347-2-PBS



## Basic Information

|                                     |  |  |
|-------------------------------------|--|--|
| Catalog Number:<br>83347-2-PBS      | GenBank Accession Number:<br>NM_000596.4 | Purification Method:<br>Protein A purification |
| Concentration:<br>1000 ug/ml        | GeneID (NCBI):<br>3484                   | CloneNo.:<br>240263B5                          |
| Source:<br>Rabbit                   | UNIPROT ID:<br>P08833                    |  |
| Isotype:<br>IgG                     | Full Name:<br>IGF binding protein 1      |  |
| Immunogen Catalog Number:<br>EG0951 | Calculated MW:<br>28 kDa                 |  |

## Applications

**Tested Applications:**  
Cytometric bead array, Sandwich ELISA, Indirect ELISA, Sample test

**Species Specificity:**  
human

## Background Information

### Storage

**Storage:**  
Store at -80°C.  
**The product is shipped with ice packs. Upon receipt, store it immediately at -80°C**

**Storage Buffer:**  
PBS only, pH7.3

For technical support and original validation data for this product please contact:

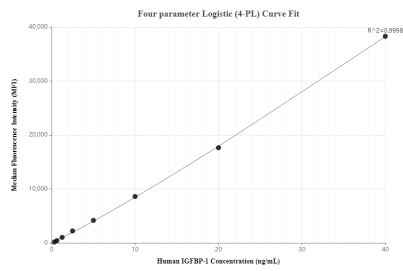
T: 4006900926

E: Proteintech-CN@ptglab.com

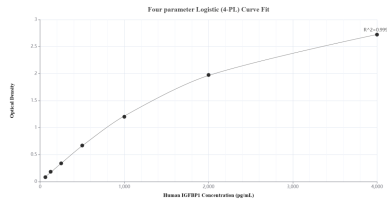
W: ptgcn.com

**This product is exclusively available under Proteintech Group brand and is not available to purchase from any other manufacturer.**

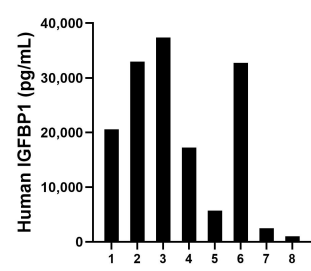
Selected Validation Data



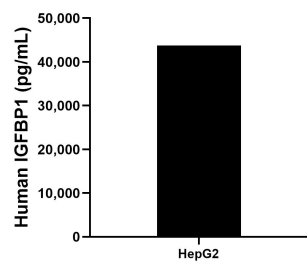
Cytometric bead array standard curve of MP00355-3, IGFBP1 Recombinant Matched Antibody Pair, PBS Only. Capture antibody: 83347-2-PBS. Detection antibody: 83347-4-PBS. Standard: Eg0951. Range: 0.313-40 ng/mL



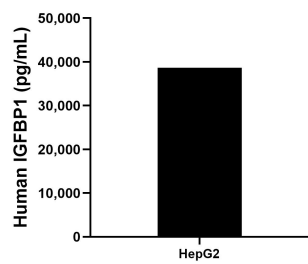
Sandwich ELISA standard curve of MP00355-3, Human IGFBP1 Recombinant Matched Antibody Pair - PBS only. 83347-2-PBS was coated to a plate as the capture antibody and incubated with serial dilutions of standard Eg0951. 83347-4-PBS was HRP conjugated as the detection antibody. Range: 62.5-4000 pg/mL



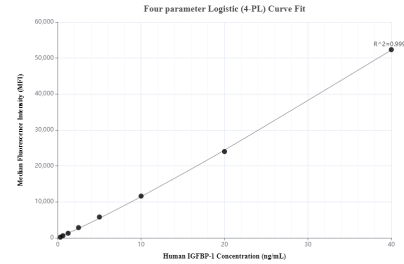
Serum of eight individual healthy human donors was measured. The IGFBP1 concentration of detected samples was determined to be 18,764.2 pg/mL with a range of 1,025.1 - 37,369.6 pg/mL



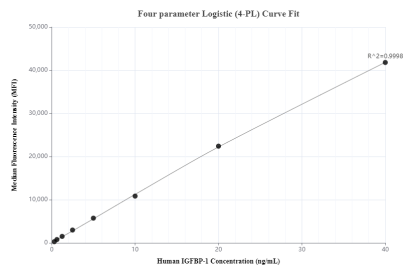
HepG2 cells were cultured in DMEM supplemented with 10% fetal bovine serum, 2.5 mM L-glutamine, 100 U/mL penicillin, and 100 µg/mL streptomycin sulfate. An aliquot of the cell culture supernate was removed, assayed for human IGFBP1, and measured 43,726.4 pg/mL



The mean IGFBP1 concentration was determined to be 38,698.4 pg/mL in HepG2 cell extract based on a 1.5 mg/mL extract load.



Cytometric bead array standard curve of MP00355-1, IGFBP1 Recombinant Matched Antibody Pair, PBS Only. Capture antibody: 83347-2-PBS. Detection antibody: 83347-3-PBS. Standard: Eg0951. Range: 0.313-40 ng/mL



Cytometric bead array standard curve of MP00355-2, IGFBP1 Recombinant Matched Antibody Pair, PBS Only. Capture antibody: 83347-2-PBS. Detection antibody: 83347-1-PBS. Standard: Eg0951. Range: 0.313-40 ng/mL