

For Research Use Only

RHOBTB1 Recombinant antibody, PBS Only (Detector)



Catalog Number: 83342-1-PBS

Basic Information

Catalog Number: 83342-1-PBS	GenBank Accession Number: BC032848	Purification Method: Protein A purification
Size: 1 mg/ml	GeneID (NCBI): 9886	CloneNo.: 240253F10
Source: Rabbit	UNIPROT ID: O94844	
Isotype: IgG	Full Name: Rho-related BTB domain containing 1	
Immunogen Catalog Number: AG3365	Calculated MW: 696 aa, 79 kDa	

Applications

Tested Applications:
WB, Indirect ELISA, Cytometric bead array

Species Specificity:
Human

Background Information

Storage

Storage:
Store at -80°C.
The product is shipped with ice packs. Upon receipt, store it immediately at -80°C

Storage Buffer:
PBS Only

For technical support and original validation data for this product please contact:

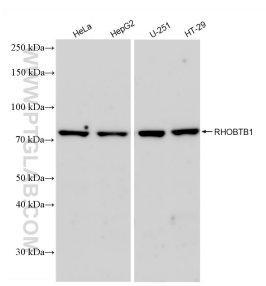
T: 4006900926

E: Proteintech-CN@ptglab.com

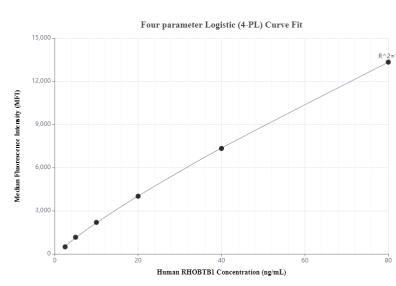
W: ptgcn.com

This product is exclusively available under Proteintech Group brand and is not available to purchase from any other manufacturer.

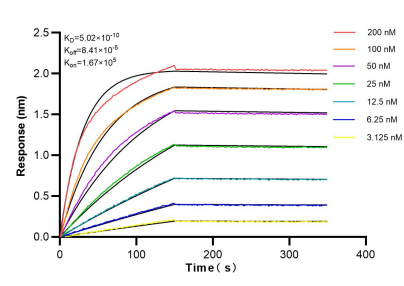
Selected Validation Data



Various lysates were subjected to SDS PAGE followed by western blot with 83342-1-RR (RHOBTB1 antibody) at dilution of 1:10000 incubated at room temperature for 1.5 hours. This data was developed using the same antibody clone with 83342-1-PBS in a different storage buffer formulation.



Cytometric bead array standard curve of MP00383-1, RHOBTB1 Recombinant Matched Antibody Pair, PBS Only. Capture antibody: 83342-2-PBS. Detection antibody: 83342-1-PBS. Standard: Ag3365. Range: 2.5-80 ng/mL.



Biolayer interferometry (BLI) kinetic assays of 83342-1-RR against Human RHOBTB1 were performed. The affinity constant is 0.502 nM.