

For Research Use Only

CRIP1 Recombinant antibody, PBS Only (Capture/Detector)

Catalog Number: 83340-3-PBS



Basic Information

Catalog Number: 83340-3-PBS	GenBank Accession Number: BC002738	Purification Method: Protein A purification
Size: 1 mg/ml	GeneID (NCBI): 1396	CloneNo.: 240176G2
Source: Rabbit	UNIPROT ID: P50238	
Isotype: IgG	Full Name: cysteine-rich protein 1 (intestinal)	
Immunogen Catalog Number: AG7588	Calculated MW: 9 kDa	
	Observed MW: 8-9 kDa	

Applications

Tested Applications:
WB, IHC, Cytometric bead array, Sandwich ELISA,
Indirect ELISA, Sample test

Species Specificity:
human, mouse

Background Information

CRIP1 also known as CRIP, CRP1, belongs to the LIM/double zinc finger protein family. CRIP1 has a unique double zinc finger motif, which is mainly expressed in the intestine, and may be involved in intestinal zinc transport (PMID: 31312368, 1946385). CRIP1 is overexpressed in immune cells of the epithelium and may play an important role in gut immunity (PMID: 27836662).

Storage

Storage:
Store at -80°C.
The product is shipped with ice packs. Upon receipt, store it immediately at -80°C

Storage Buffer:
PBS Only

For technical support and original validation data for this product please contact:

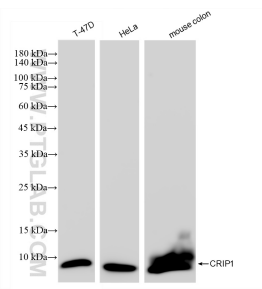
T: 4006900926

E: Proteintech-CN@ptglab.com

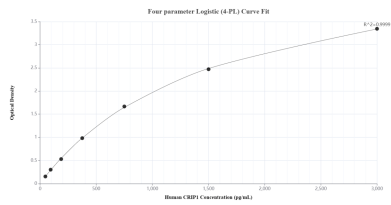
W: ptgcn.com

This product is exclusively available under Proteintech Group brand and is not available to purchase from any other manufacturer.

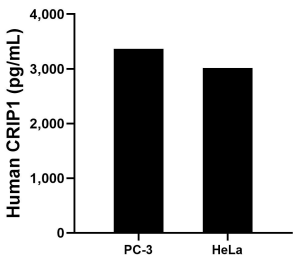
Selected Validation Data



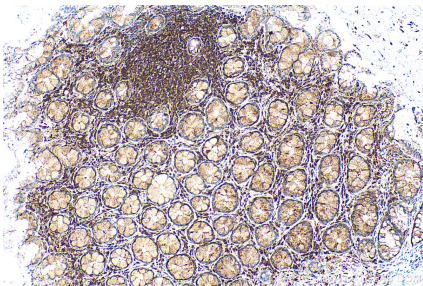
Various lysates were subjected to SDS PAGE followed by western blot with 83340-3-RR (CRIP1 antibody) at dilution of 1:10000 incubated at room temperature for 1.5 hours. This data was developed using the same antibody clone with 83340-3-PBS in a different storage buffer formulation.



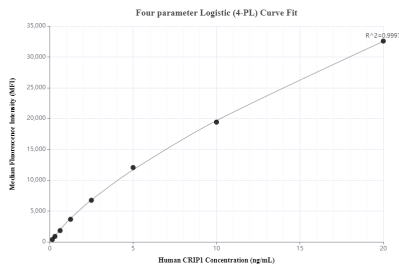
Sandwich ELISA standard curve of MP00382-3, Human CRIP1 Recombinant Matched Antibody Pair - PBS only. 83340-4-PBS was coated to a plate as the capture antibody and incubated with serial dilutions of standard Ag7588. 83340-3-PBS was HRP conjugated as the detection antibody. Range: 46.88-3000 pg/mL.



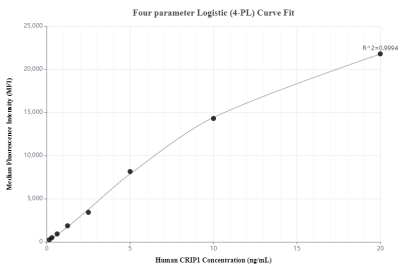
The mean CRIP1 concentration was determined to be 3,364.0 pg/mL in PC-3 cell extract based on a 3.0 mg/mL extract load and 3,015.0 pg/mL in HeLa cell extract based on a 3.0 mg/mL extract load.



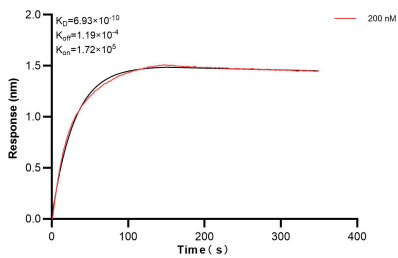
Immunohistochemical analysis of paraffin-embedded human colon tissue slide using 83340-3-RR (CRIP1 antibody) at dilution of 1:400 (under 10x lens). Heat mediated antigen retrieval with Tris-EDTA buffer (pH 9.0). This data was developed using the same antibody clone with 83340-3-PBS in a different storage buffer formulation.



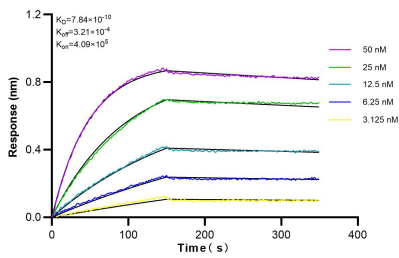
Cytometric bead array standard curve of MP00382-1, CRIP1 Recombinant Matched Antibody Pair, PBS Only. Capture antibody: 83340-3-PBS. Detection antibody: 83340-2-PBS. Standard: Ag7588. Range: 0.156-20 ng/mL.



Cytometric bead array standard curve of MP00382-2, CRIP1 Recombinant Matched Antibody Pair, PBS Only. Capture antibody: 83340-1-PBS. Detection antibody: 83340-3-PBS. Standard: Ag7588. Range: 0.156-20 ng/mL.



Biolayer interferometry (BLI) kinetic assay of 83340-3-PBS against Human CRIP1 was performed. The affinity constant is 0.693 nM.



Biolayer interferometry (BLI) kinetic assays of 83340-3-RR against Human CRIP1 were performed. The affinity constant is 0.784 nM.