

For Research Use Only

# DNase I Recombinant antibody

Catalog Number: 83337-6-RR



## Basic Information

Catalog Number:

83337-6-RR

Size:

1000 ug/ml

Source:

Rabbit

Isotype:

IgG

Immunogen Catalog Number:

AG10117

GenBank Accession Number:

BC029437

GeneID (NCBI):

1773

UNIPROT ID:

P24855

Full Name:

deoxyribonuclease I

Calculated MW:

282 aa, 31 kDa

Observed MW:

31-40 kDa

Purification Method:

Protein A purification

CloneNo.:

240222F11

Recommended Dilutions:

WB 1:1000-1:4000

## Applications

Tested Applications:

WB, ELISA

Species Specificity:

human, mouse

Positive Controls:

WB : mouse heart tissue, human urine sample

## Background Information

Deoxyribonuclease I (DNase I), also known as DNL1 and DRNI, belongs to the DNase I family. DNase I is a DNA-digestive glycoprotein that cleaves both single- and double stranded DNA through hydrolysis of the phosphodiester bond. In humans, the DNase I enzyme is primarily secreted by the pancreas, parotid, and pituitary glands into the digestive system and bloodstream. Since DNase I is ubiquitously expressed in human tissues, it is thought to play a similar anti-autoimmune role in other organs as well (PMID: 21806320). The calculated molecular weight of DNase I is 31 kDa. Sometimes higher molecular weight around 40 kDa can also be observed, which is caused by glycosylation (PMID: 34329318).

## Storage

Storage:

Store at -20°C. Stable for one year after shipment.

Storage Buffer:

PBS with 0.02% sodium azide and 50% glycerol pH 7.3.

Aliquoting is unnecessary for -20°C storage

For technical support and original validation data for this product please contact:

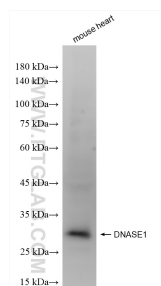
T: 4006900926

E: Proteintech-CN@ptglab.com

W: ptgcn.com

This product is exclusively available under Proteintech Group brand and is not available to purchase from any other manufacturer.

## Selected Validation Data



mouse heart tissue were subjected to SDS PAGE followed by western blot with 83337-6-RR (DNase I antibody) at dilution of 1:2000 incubated at room temperature for 1.5 hours.