

For Research Use Only

RAB13 Recombinant antibody, PBS Only (Capture)

Catalog Number: 83336-2-PBS



Basic Information

Catalog Number: 83336-2-PBS	GenBank Accession Number: BC000799	Purification Method: Protein A purification
Size: 1 mg/ml	GeneID (NCBI): 5872	CloneNo.: 240216D10
Source: Rabbit	UNIPROT ID: P51153	
Isotype: IgG	Full Name: RAB13, member RAS oncogene family	
Immunogen Catalog Number: AG34898	Calculated MW: 203 aa, 23 kDa	
	Observed MW: 23 kDa	

Applications

Tested Applications:
WB, IF/ICC, FC (Intra), Cytometric bead array, Indirect ELISA

Species Specificity:
human

Background Information

RAB13 (Ras-related protein Rab-13) is also named as GIG4. Rab13 is a member of the Rab GTPase family. RAB13 is highly expressed in malignant cells. Rab13 was highly expressed in BCSC of triple-negative breast cancer (TNBC) (PMID: 35395074). RAB13 is involved in a number of processes in LHC, including MTORC1 signaling, MYC targets v1, G2M checkpoint, MITOTIC spindle, DNA repair, P53 pathway, glycolysis, PI3K-AKT-MTOR signaling, etc (PMID: 37803063). RAB13 enhances its circulation to the plasma membrane to promote breast cancer invasion. By influencing the tumor microenvironment, RAB13 maintains breast cancer stem cells (PMID: 37803063).

Storage

Storage:
Store at -80°C.
The product is shipped with ice packs. Upon receipt, store it immediately at -80°C

Storage Buffer:
PBS Only

For technical support and original validation data for this product please contact:

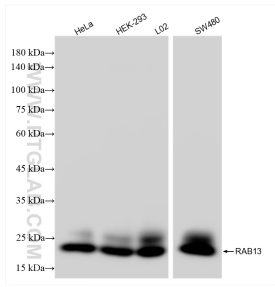
T: 4006900926

E: Proteintech-CN@ptglab.com

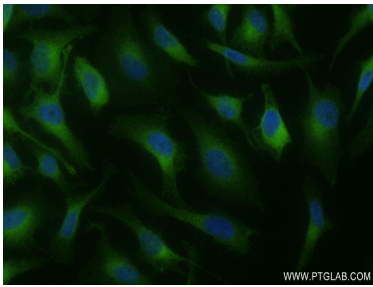
W: ptgcn.com

This product is exclusively available under Proteintech Group brand and is not available to purchase from any other manufacturer.

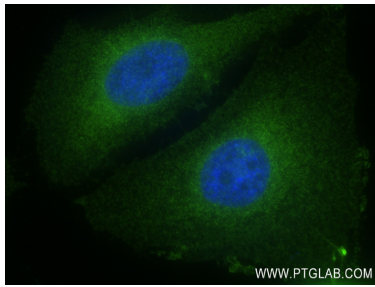
Selected Validation Data



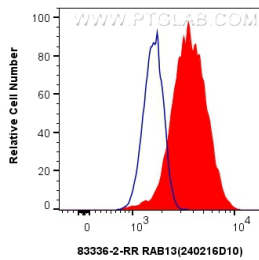
Various lysates were subjected to SDS PAGE followed by western blot with 83336-2-RR (RAB13 antibody) at dilution of 1:10000 incubated at room temperature for 1.5 hours. This data was developed using the same antibody clone with 83336-2-PBS in a different storage buffer formulation.



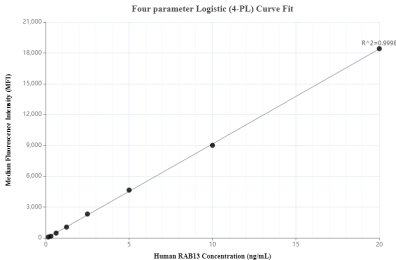
Immunofluorescent analysis of (4% PFA) fixed HeLa cells using RAB13 antibody (83336-2-RR, Clone: 240216D10) at dilution of 1:200 and CoraLite®488-Conjugated AffiniPure Goat Anti-Rabbit IgG(H+L) (SA00013-2). This data was developed using the same antibody clone with 83336-2-PBS in a different storage buffer formulation.



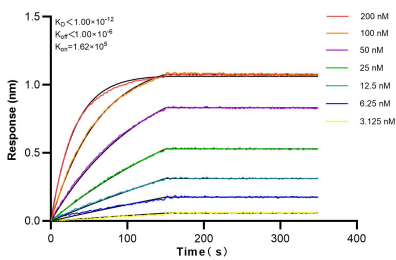
Immunofluorescent analysis of (4% PFA) fixed HeLa cells using RAB13 antibody (83336-2-RR, Clone: 240216D10) at dilution of 1:200 and CoraLite®488-Conjugated AffiniPure Goat Anti-Rabbit IgG(H+L) (SA00013-2). This data was developed using the same antibody clone with 83336-2-PBS in a different storage buffer formulation.



1x10⁶ K-562 cells were intracellularly stained with 0.25 ug RAB13 Recombinant antibody (83336-2-RR, Clone:240216D10) and CoraLite®488-Conjugated Goat Anti-Rabbit IgG(H+L) (SA00013-2)(red), or 0.25 ug Rabbit IgG Isotype Control Recombinant Antibody (98136-1-RR, Clone: 240953C9) (blue). Cells were fixed with 4% PFA and permeabilized with Flow Cytometry Perm Buffer (PF00011-C). This data was developed using the same antibody clone with 83336-2-PBS in a



Cytometric bead array standard curve of MP00354-1, RAB13 Recombinant Matched Antibody Pair - PBS only. Capture antibody: 83336-2-PBS. Detection antibody: 83336-1-PBS. Standard: Ag34898. Range: 0.156-20 ng/mL.



Biolayer interferometry (BLI) kinetic assays of 83336-2-RR against Human RAB13 were performed. The affinity constant is below 1 pM.