

For Research Use Only

# Bcl-XL Recombinant antibody

Catalog Number: 83330-2-RR



## Basic Information

Catalog Number:	GenBank Accession Number:	Purification Method:
83330-2-RR	BC019307	Protein A purification
Concentration:	GeneID (NCBI):	CloneNo.:
1000 ug/ml	598	240450A9
Source:	UNIPROT ID:	Recommended Dilutions:
Rabbit	Q07817	IHC 1:200-1:800
Isotype:	Full Name:	IF/ICC 1:125-1:500
IgG	BCL2-like 1	
Immunogen Catalog Number:	Calculated MW:	
AG25604	26 kDa	

## Applications

Tested Applications:	Positive Controls:
IHC, IF/ICC, FC (Intra), ELISA	IHC : human colon cancer tissue,
Species Specificity:	IF/ICC : HeLa cells,
human	

**Note-IHC: suggested antigen retrieval with TE buffer pH 9.0; (\*) Alternatively, antigen retrieval may be performed with citrate buffer pH 6.0**

## Background Information

BCL2L1 is a member of the BCL-2 protein family. BCL2L1 is expressed as three isoforms, Bcl-X(L), Bcl-X(s), and Bcl-X(beta), and is located at the outer mitochondrial membrane. The Bcl-X(L) isoform is a 233 amino acid protein, acting as an apoptotic inhibitor. Bcl-XL can form heterodimers with BAX, BAK or BCL2, and the heterodimerization with BAX does not seem to be required for anti-apoptotic activity. The Bcl-X(s) isoform is a shorter variant that is 178 amino acids in length and lacks a 63 amino acid region (amino acids 126-188), acting as an apoptotic activator. Bcl-X(beta) is a 227 amino acid protein.

## Storage

**Storage:**  
Store at -20°C. Stable for one year after shipment.  
**Storage Buffer:**  
PBS with 0.02% sodium azide and 50% glycerol pH 7.3.  
Aliquoting is unnecessary for -20°C storage

For technical support and original validation data for this product please contact:

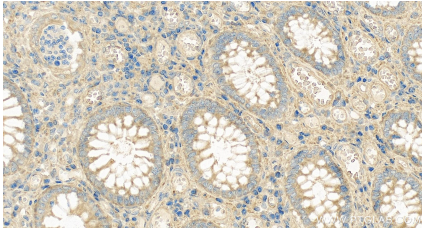
T: 4006900926

E: [Proteintech-CN@ptglab.com](mailto:Proteintech-CN@ptglab.com)

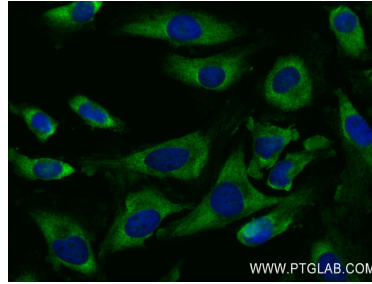
W: [ptgcn.com](http://ptgcn.com)

**This product is exclusively available under Proteintech Group brand and is not available to purchase from any other manufacturer.**

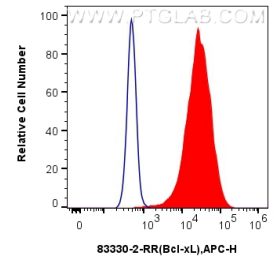
## Selected Validation Data



Immunohistochemical analysis of paraffin-embedded human colon cancer tissue slide using 83330-2-RR (Bcl-XL antibody) at dilution of 1:400 (under 40x lens). Heat mediated antigen retrieval with Tris-EDTA buffer (pH 9.0).



Immunofluorescent analysis of (4% PFA) fixed HeLa cells using Bcl-xL antibody (83330-2-RR, Clone: 240450A9) at dilution of 1:250 and Multi-rAb CoraLite® Plus 488-Goat Anti-Rabbit Recombinant Secondary Antibody (H+L) (RGAR002).



1x10<sup>6</sup> HeLa cells were intracellularly stained with 0.25 ug Bcl-xL Recombinant antibody (83330-2-RR, Clone:240450A9) and APC-Conjugated AffiniPure Goat Anti-Rabbit IgG(H+L)(red), or 0.25 ug Isotype Control (blue). Cells were fixed with 4% PFA and permeabilized with Flow Cytometry Perm Buffer (PF00011-C).