

For Research Use Only

# Bcl-XL Recombinant antibody, PBS Only

Catalog Number:83330-1-PBS



## Basic Information

Catalog Number: 83330-1-PBS	GenBank Accession Number: BC019307	Purification Method: Protein A purification
Size: 1 mg/ml	GeneID (NCBI): 598	CloneNo.: 1E8
Source: Rabbit	UNIPROT ID: Q07817	
Isotype: IgG	Full Name: BCL2-like 1	
Immunogen Catalog Number: AG25604	Calculated MW: 26 kDa	

## Applications

**Tested Applications:**  
WB, IF/ICC, FC (Intra), Indirect ELISA

**Species Specificity:**  
human, mouse, rat

## Background Information

### Storage

**Storage:**  
Store at -80°C.  
**The product is shipped with ice packs. Upon receipt, store it immediately at -80°C**

**Storage Buffer:**  
PBS Only

For technical support and original validation data for this product please contact:

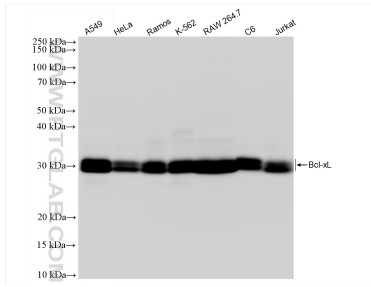
T: 4006900926

E: Proteintech-CN@ptglab.com

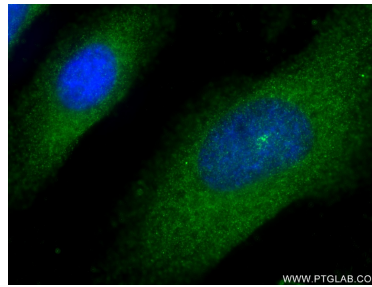
W: ptgcn.com

**This product is exclusively available under Proteintech Group brand and is not available to purchase from any other manufacturer.**

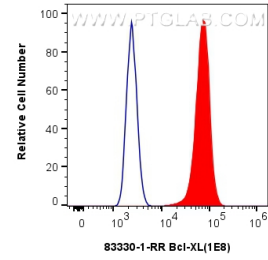
## Selected Validation Data



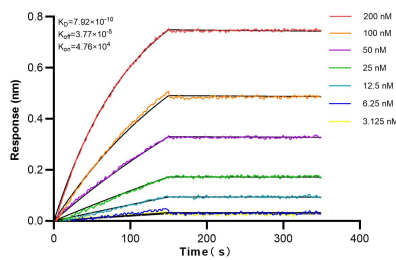
Various lysates were subjected to SDS PAGE followed by western blot with 83330-1-RR (Bcl-xL antibody) at dilution of 1:10000 incubated at room temperature for 1.5 hours. This data was developed using the same antibody clone with 83330-1-PBS in a different storage buffer formulation.



Immunofluorescent analysis of (-20°C Ethanol) fixed HeLa cells using Bcl-xL antibody (83330-1-RR, Clone: 1E8) at dilution of 1:250 and CoraLite®488-Conjugated AffiniPure Goat Anti-Rabbit IgG(H+L) (SA00013-2). This data was developed using the same antibody clone with 83330-1-PBS in a different storage buffer formulation.



1x10<sup>6</sup> HeLa cells were intracellularly stained with 0.25 ug Bcl-xL Recombinant antibody (83330-1-RR, Clone:1E8) and CoraLite®488-Conjugated AffiniPure Goat Anti-Rabbit IgG(H+L) (SA00013-2) (red), or 0.25 ug Isotype Control (blue). Cells were fixed with 4% PFA and permeabilized with Flow Cytometry Perm Buffer (PF00011-C). This data was developed using the same antibody clone with 83330-1-PBS in a different storage buffer formulation.



Biolayer interferometry (BLI) kinetic assays of 83330-1-RR against Human Bcl-xL were performed. The affinity constant is 0.792 nM.