

For Research Use Only

GPC1 Recombinant antibody, PBS Only (Detector)



Catalog Number: 83318-4-PBS

Basic Information

Catalog Number:

83318-4-PBS

Size:

1 mg/ml

Source:

Rabbit

Isotype:

IgG

GenBank Accession Number:

BC051279

GeneID (NCBI):

2817

UNIPROT ID:

P35052

Full Name:

glypican 1

Calculated MW:

558 aa, 62 kDa

Purification Method:

Protein A purification

CloneNo.:

240207G5

Applications

Tested Applications:

WB, Indirect ELISA, Cytometric bead array

Species Specificity:

Human

Background Information

Storage

Storage:

Store at -80°C.

The product is shipped with ice packs. Upon receipt, store it immediately at -80°C

Storage Buffer:

PBS Only

For technical support and original validation data for this product please contact:

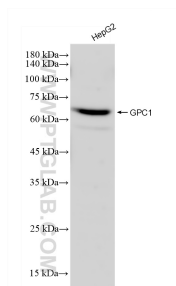
T: 4006900926

E: Proteintech-CN@ptglab.com

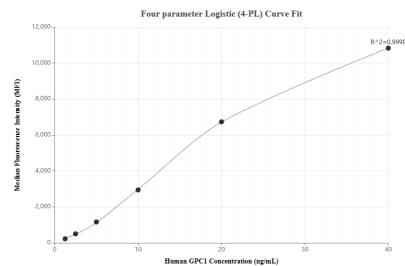
W: ptgcn.com

This product is exclusively available under Proteintech Group brand and is not available to purchase from any other manufacturer.

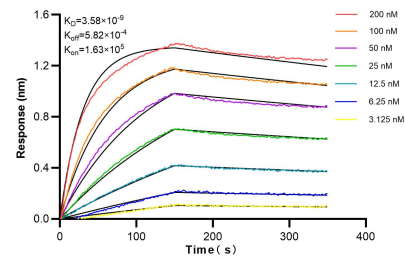
Selected Validation Data



HepG2 cells were subjected to SDS PAGE followed by western blot with 83318-4-RR (GPC1 antibody) at dilution of 1:1000 incubated at room temperature for 1.5 hours. This data was developed using the same antibody clone with 83318-4-PBS in a different storage buffer formulation.



Cytometric bead array standard curve of MP00342-1, GPC1 Recombinant Matched Antibody Pair, PBS Only. Capture antibody: 83318-2-PBS. Detection antibody: 83318-4-PBS. Standard: Eg0737. Range: 1.25-40 ng/mL



Biolayer interferometry (BLI) kinetic assays of 83318-4-RR against Human GPC1 were performed. The affinity constant is 3.58 nM.