

For Research Use Only

# GPC1 Recombinant antibody, PBS Only (Capture)



Catalog Number: 83318-3-PBS

## Basic Information

Catalog Number:

83318-3-PBS

Size:

1 mg/ml

Source:

Rabbit

Isotype:

IgG

GenBank Accession Number:

BC051279

GeneID (NCBI):

2817

UNIPROT ID:

P35052

Full Name:

glypican 1

Calculated MW:

558 aa, 62 kDa

Purification Method:

Protein A purification

CloneNo.:

240207E12

## Applications

Tested Applications:

Cytometric bead array, Sandwich ELISA, Indirect ELISA, Sample test

Species Specificity:

human

## Background Information

### Storage

Storage:

Store at -80°C.

**The product is shipped with ice packs. Upon receipt, store it immediately at -80°C**

Storage Buffer:

PBS Only

For technical support and original validation data for this product please contact:

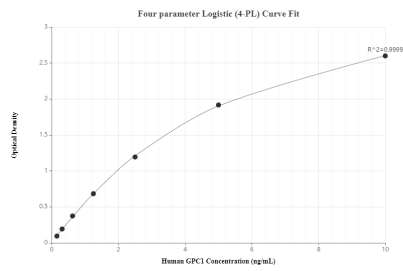
T: 4006900926

E: [Proteintech-CN@ptglab.com](mailto:Proteintech-CN@ptglab.com)

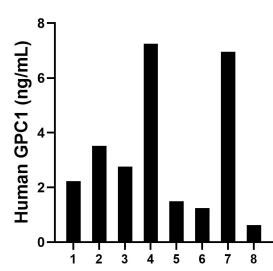
W: [ptgcn.com](http://ptgcn.com)

**This product is exclusively available under Proteintech Group brand and is not available to purchase from any other manufacturer.**

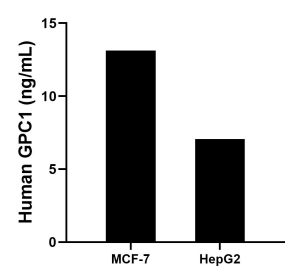
Selected Validation Data



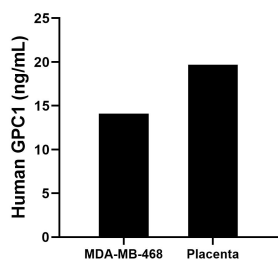
Sandwich ELISA standard curve of MP00342-2, human GPC1 Recombinant Matched Antibody Pair - PBS only. 83318-3-PBS was coated to a plate as the capture antibody and incubated with serial dilutions of standard Eg0737. 83318-2-PBS was HRP conjugated as the detection antibody. Range: 0.156-10 ng/mL



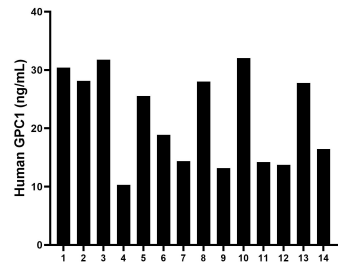
Urine of eight individual healthy human donors was measured. The GPC1 concentration of detected samples was determined to be 3.3 ng/mL with a range of 0.6 - 7.2 ng/mL



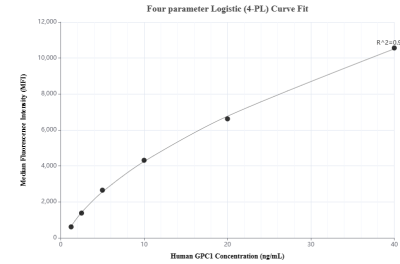
MCF-7 human breast cancer cells ( $5 \times 10^6$  cells/mL) were cultured in DMEM and 10% fetal bovine serum, 4 mM L-glutamine, 4500 mg/L glucose, 100 U/mL penicillin, and 100  $\mu$ g/mL streptomycin sulfate. An aliquot of the cell culture supernatants was removed, assayed for human GPC1, and measured 13.1 ng/mL. HepG2 human hepatocellular carcinoma cells ( $5 \times 10^6$  cells/mL) were cultured in DMEM supplemented with 10% fetal bovine serum, 100 U/mL penicillin, and



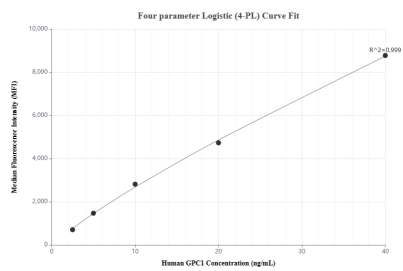
The mean GPC1 concentration was determined to be 10.0 ng/mL in MDA-MB-468 cell extract based on a 3.2 mg/mL extract load and 19.7 ng/mL in placenta tissue extract based on a 1.8 mg/mL extract load.



Serum of fourteen individual healthy human donors was measured. The GPC1 concentration of detected samples was determined to be 21.8 ng/mL with a range of 10.3 - 32.1 ng/mL



Cytometric bead array standard curve of MP00342-2, GPC1 Recombinant Matched Antibody Pair, PBS Only. Capture antibody: 83318-3-PBS. Detection antibody: 83318-2-PBS. Standard: Eg0737. Range: 1.25-40 ng/mL



Cytometric bead array standard curve of MP00342-3, GPC1 Recombinant Matched Antibody Pair, PBS Only. Capture antibody: 83318-3-PBS. Detection antibody: 83318-1-PBS. Standard: Eg0737. Range: 2.5-40 ng/mL