

For Research Use Only

NUPR1 Recombinant antibody, PBS Only (Capture)



Catalog Number: 83315-2-PBS

Basic Information

Catalog Number: 83315-2-PBS	GenBank Accession Number: BC002434	Purification Method: Protein A purification
Size: 1 mg/ml	GeneID (NCBI): 26471	CloneNo.: 240149G4
Source: Rabbit	UNIPROT ID: O60356	
Isotype: IgG	Full Name: nuclear protein 1	
Immunogen Catalog Number: AG7039	Calculated MW: 8 kDa	

Applications

Tested Applications:
Cytometric bead array, Indirect ELISA, WB

Species Specificity:
human

Background Information

Storage

Storage:
Store at -80°C.
The product is shipped with ice packs. Upon receipt, store it immediately at -80°C

Storage Buffer:
PBS Only

For technical support and original validation data for this product please contact:

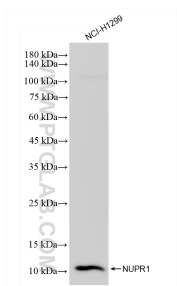
T: 4006900926

E: Proteintech-CN@ptglab.com

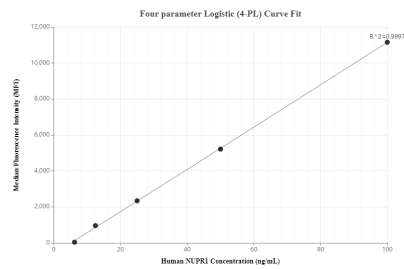
W: ptgcn.com

This product is exclusively available under Proteintech Group brand and is not available to purchase from any other manufacturer.

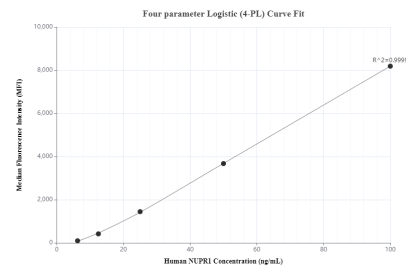
Selected Validation Data



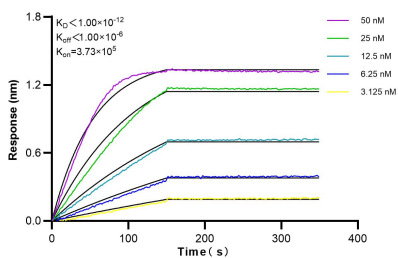
NCI-H1299 cells were subjected to SDS PAGE followed by western blot with 83315-2-RR (NUPR1 antibody) at dilution of 1:1000 incubated at room temperature for 1.5 hours. This data was developed using the same antibody clone with 83315-2-PBS in a different storage buffer formulation.



Cytometric bead array standard curve of MP00339-2, NUPR1 Recombinant Matched Antibody Pair, PBS Only. Capture antibody: 83315-2-PBS. Detection antibody: 83315-4-PBS. Standard: Ag7039. Range: 6.25-100 ng/mL.



Cytometric bead array standard curve of MP00339-3, NUPR1 Recombinant Matched Antibody Pair, PBS Only. Capture antibody: 83315-2-PBS. Detection antibody: 83315-3-PBS. Standard: Ag7039. Range: 6.25-100 ng/mL.



Biolayer interferometry (BLI) kinetic assays of 83315-2-RR against Human NUPR1 were performed. The affinity constant is below 1 pM.