

For Research Use Only

# BRAP Recombinant antibody, PBS Only (Capture/Detector)

Catalog Number: 83314-5-PBS



## Basic Information

Catalog Number:

83314-5-PBS

Size:

1 mg/ml

Source:

Rabbit

Isotype:

IgG

Immunogen Catalog Number:

AG26728

GenBank Accession Number:

BC136698

GeneID (NCBI):

8315

UNIPROT ID:

Q7Z569

Full Name:

BRCA1 associated protein

Calculated MW:

592 aa, 67 kDa

Purification Method:

Protein A purification

CloneNo.:

240099G12

## Applications

Tested Applications:

Indirect ELISA, Cytometric bead array

Species Specificity:

human

## Background Information

### Storage

Storage:

Store at -80°C.

The product is shipped with ice packs. Upon receipt, store it immediately at -80°C

Storage Buffer:

PBS Only

For technical support and original validation data for this product please contact:

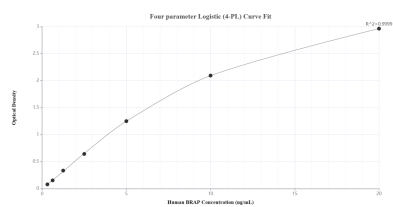
T: 4006900926

E: [Proteintech-CN@ptglab.com](mailto:Proteintech-CN@ptglab.com)

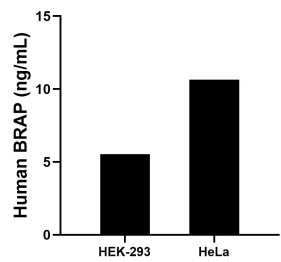
W: [ptgcn.com](http://ptgcn.com)

This product is exclusively available under Proteintech Group brand and is not available to purchase from any other manufacturer.

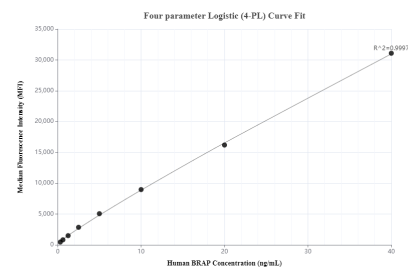
## Selected Validation Data



Sandwich ELISA standard curve of MP00338-4, Human BRAP Recombinant Matched Antibody Pair - PBS only. 83314-5-PBS was coated to a plate as the capture antibody and incubated with serial dilutions of standard Ag26728. 83314-2-PBS was HRP conjugated as the detection antibody. Range: 0.313-20 ng/mL.



The mean BRAP concentration was determined to be 5.53 ng/mL in HEK-293 cell extract based on a 1.20 mg/mL extract load and 10.64 ng/mL in HeLa cell extract based on a 1.20 mg/mL extract load.



Cytometric bead array standard curve of MP00338-1, BRAP Recombinant Matched Antibody Pair, PBS Only. Capture antibody: 83314-2-PBS. Detection antibody: 83314-5-PBS. Standard: Ag26728. Range: 0.313-40 ng/mL.