

For Research Use Only

# SMARCA4 Recombinant antibody, PBS Only (Detector)

Catalog Number: 83310-2-PBS



## Basic Information

### Catalog Number:

83310-2-PBS

### Size:

1 mg/ml

### Source:

Rabbit

### Isotype:

IgG

### Immunogen Catalog Number:

AG16256

### GenBank Accession Number:

BC150298

### GeneID (NCBI):

6597

### UNIPROT ID:

P51532

### Full Name:

SWI/SNF related, matrix associated, actin dependent regulator of chromatin, subfamily a, member 4

### Calculated MW:

1647 aa, 185 kDa

### Observed MW:

185 kDa

### Purification Method:

Protein A purification

### CloneNo.:

240172F4

## Applications

### Tested Applications:

WB, IHC, IF/ICC, FC (Intra), Cytometric bead array, Sandwich ELISA, Indirect ELISA, Sample test

### Species Specificity:

human, mouse, rat

## Background Information

SMARCA4, also named as BAF190A, BRG1, SNF2B and SNF2L4, belongs to the SNF2/RAD54 helicase family. SMARCA4 is a transcriptional coactivator cooperating with nuclear hormone receptors to potentiate transcriptional activation. It is a component of the CREST-BRG1 complex, a multiprotein complex that regulates promoter activation by orchestrating a calcium-dependent release of a repressor complex and a recruitment of an activator complex. It is also involved in vitamin D-coupled transcription regulation via its association with the WINAC complex, a chromatin-remodeling complex recruited by vitamin D receptor (VDR), which is required for the ligand-bound VDR-mediated transrepression of the CYP27B1 gene.

## Storage

### Storage:

Store at -80°C.

**The product is shipped with ice packs. Upon receipt, store it immediately at -80°C**

### Storage Buffer:

PBS Only

For technical support and original validation data for this product please contact:

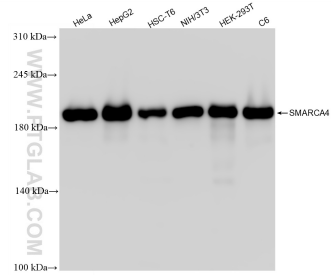
T: 4006900926

E: [Proteintech-CN@ptglab.com](mailto:Proteintech-CN@ptglab.com)

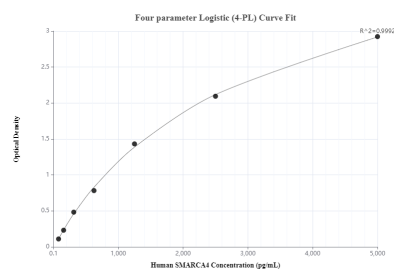
W: [ptgcn.com](http://ptgcn.com)

**This product is exclusively available under Proteintech Group brand and is not available to purchase from any other manufacturer.**

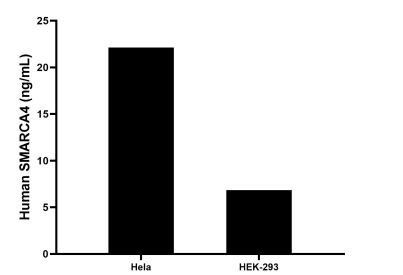
Selected Validation Data



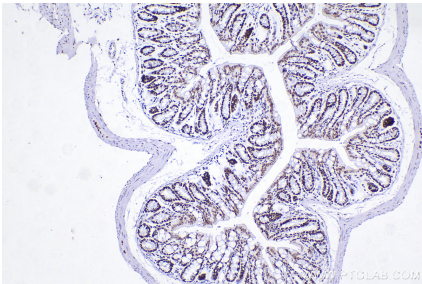
Various lysates were subjected to SDS PAGE followed by western blot with 83310-2-RR (SMARCA4 antibody) at dilution of 1:10000 incubated at room temperature for 1.5 hours. This data was developed using the same antibody clone with 83310-2-PBS in a different storage buffer formulation.



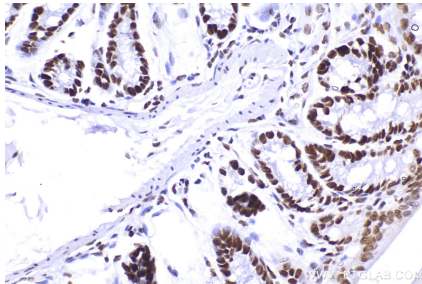
Sandwich ELISA standard curve of MP00334-1, Human SMARCA4 Recombinant Matched Antibody Pair - PBS only. 83310-1-PBS was coated to a plate as the capture antibody and incubated with serial dilutions of standard Ag16256. 83310-2-PBS was HRP conjugated as the detection antibody. Range: 78.1-5000 pg/mL.



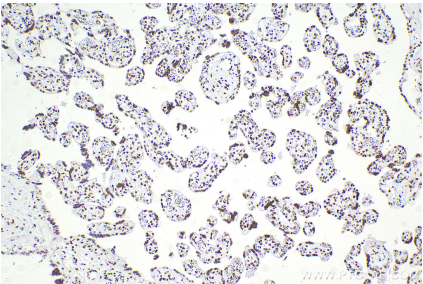
The mean SMARCA4 concentration was determined to be 22.1 ng/mL in HeLa cell extract based on a 3.6 mg/mL extract load and 6.9 ng/mL in HEK-293 cell extract based on a 4.6 mg/mL extract load.



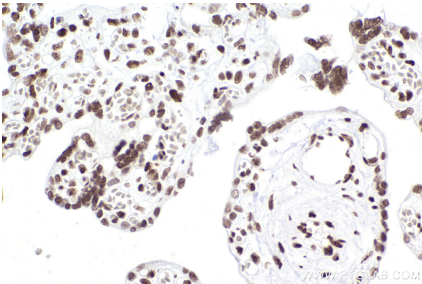
Immunohistochemical analysis of paraffin-embedded mouse colon tissue slide using 83310-2-RR (SMARCA4 antibody) at dilution of 1:8000 (under 10x lens). Heat mediated antigen retrieval with . This data was developed using the same antibody clone with 83310-2-PBS in a different storage buffer formulation.



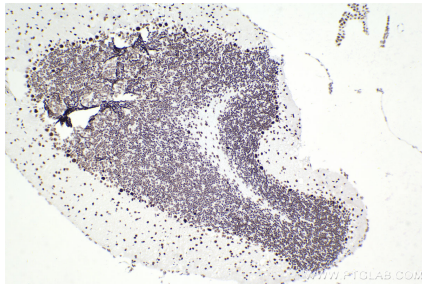
Immunohistochemical analysis of paraffin-embedded mouse colon tissue slide using 83310-2-RR (SMARCA4 antibody) at dilution of 1:8000 (under 40x lens). Heat mediated antigen retrieval with . This data was developed using the same antibody clone with 83310-2-PBS in a different storage buffer formulation.



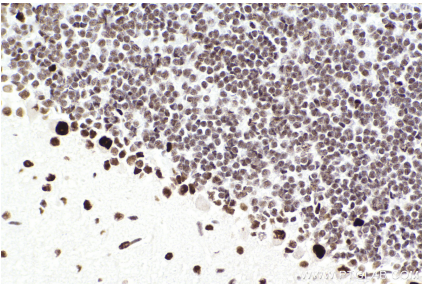
Immunohistochemical analysis of paraffin-embedded human placenta tissue slide using 83310-2-RR (SMARCA4 antibody) at dilution of 1:4000 (under 10x lens). Heat mediated antigen retrieval with Tris-EDTA buffer (pH 9.0). This data was developed using the same antibody clone with 83310-2-PBS in a different storage buffer formulation.



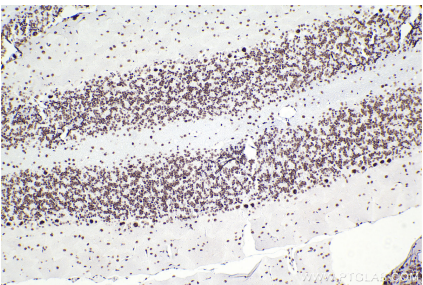
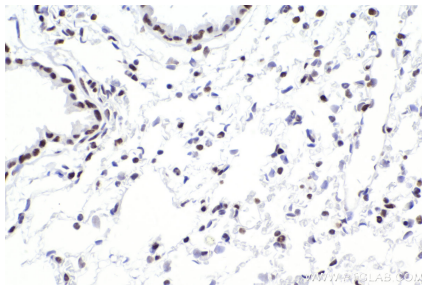
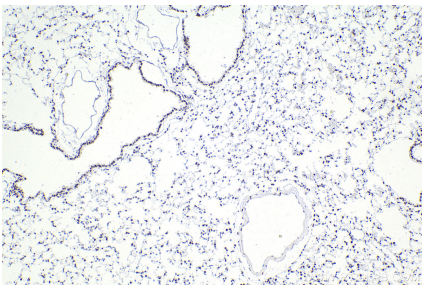
Immunohistochemical analysis of paraffin-embedded human placenta tissue slide using 83310-2-RR (SMARCA4 antibody) at dilution of 1:4000 (under 40x lens). Heat mediated antigen retrieval with Tris-EDTA buffer (pH 9.0). This data was developed using the same antibody clone with 83310-2-PBS in a different storage buffer formulation.



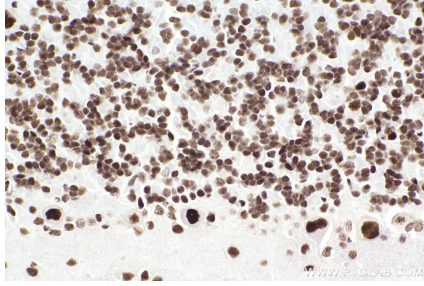
Immunohistochemical analysis of paraffin-embedded mouse cerebellum tissue slide using 83310-2-RR (SMARCA4 antibody) at dilution of 1:4000 (under 10x lens). Heat mediated antigen retrieval with Tris-EDTA buffer (pH 9.0). This data was developed using the same antibody clone with 83310-2-PBS in a different storage buffer formulation.



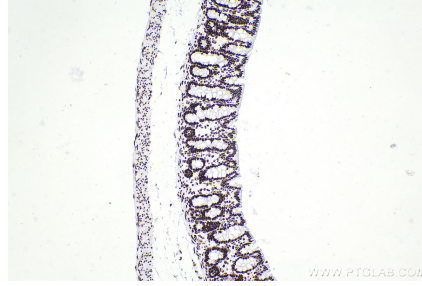
Immunohistochemical analysis of paraffin-embedded mouse cerebellum tissue slide using 83310-2-RR (SMARCA4 antibody) at dilution of 1:4000 (under 40x lens). Heat mediated antigen retrieval with Tris-EDTA buffer (pH 9.0). This data was developed using the same antibody clone with 83310-2-PBS in a different storage buffer formulation.



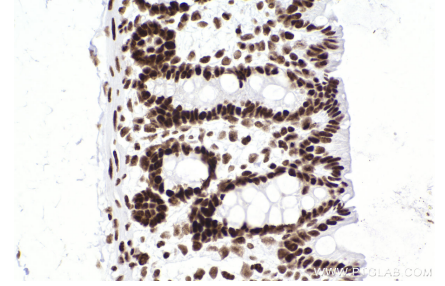
Immunohistochemical analysis of paraffin-embedded mouse lung tissue slide using 83310-2-RR (SMARCA4 antibody) at dilution of 1:4000 (under 10x lens). Heat mediated antigen retrieval with Tris-EDTA buffer (pH 9.0). This data was developed using the same antibody clone with 83310-2-PBS in a different storage buffer formulation.



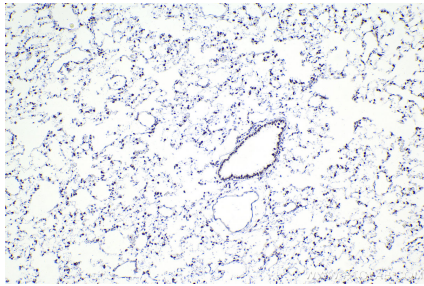
Immunohistochemical analysis of paraffin-embedded mouse lung tissue slide using 83310-2-RR (SMARCA4 antibody) at dilution of 1:4000 (under 40x lens). Heat mediated antigen retrieval with Tris-EDTA buffer (pH 9.0). This data was developed using the same antibody clone with 83310-2-PBS in a different storage buffer formulation.



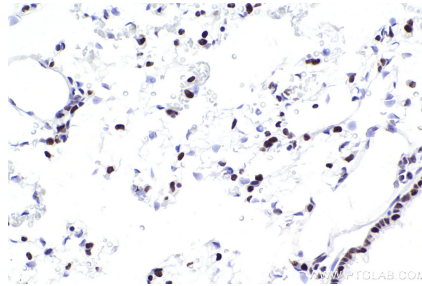
Immunohistochemical analysis of paraffin-embedded rat cerebellum tissue slide using 83310-2-RR (SMARCA4 antibody) at dilution of 1:4000 (under 10x lens). Heat mediated antigen retrieval with Tris-EDTA buffer (pH 9.0). This data was developed using the same antibody clone with 83310-2-PBS in a different storage buffer formulation.



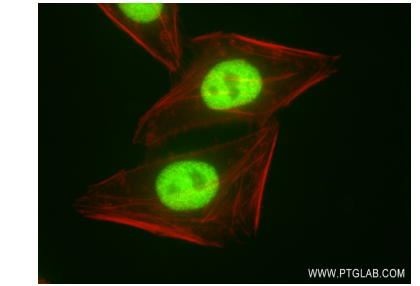
Immunohistochemical analysis of paraffin-embedded rat cerebellum tissue slide using 83310-2-RR (SMARCA4 antibody) at dilution of 1:4000 (under 40x lens). Heat mediated antigen retrieval with Tris-EDTA buffer (pH 9.0). This data was developed using the same antibody clone with 83310-2-PBS in a different storage buffer formulation.



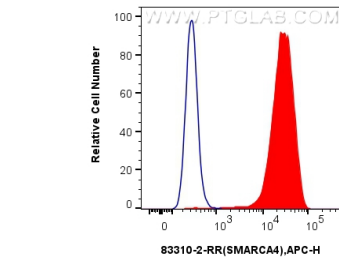
Immunohistochemical analysis of paraffin-embedded rat colon tissue slide using 83310-2-RR (SMARCA4 antibody) at dilution of 1:4000 (under 10x lens). Heat mediated antigen retrieval with Tris-EDTA buffer (pH 9.0). This data was developed using the same antibody clone with 83310-2-PBS in a different storage buffer formulation.



Immunohistochemical analysis of paraffin-embedded rat colon tissue slide using 83310-2-RR (SMARCA4 antibody) at dilution of 1:4000 (under 40x lens). Heat mediated antigen retrieval with Tris-EDTA buffer (pH 9.0). This data was developed using the same antibody clone with 83310-2-PBS in a different storage buffer formulation.

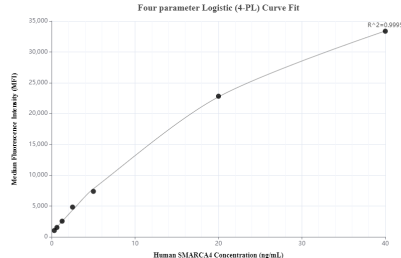


Immunohistochemical analysis of paraffin-embedded rat lung tissue slide using 83310-2-RR (SMARCA4 antibody) at dilution of 1:4000 (under 10x lens). Heat mediated antigen retrieval with Tris-EDTA buffer (pH 9.0). This data was developed using the same antibody clone with 83310-2-PBS in a different storage buffer formulation.



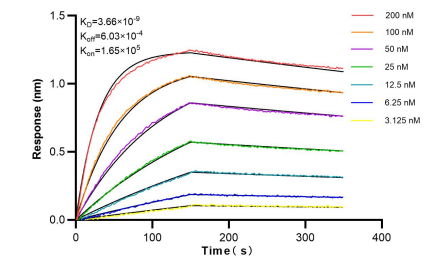
1x10<sup>6</sup> Jurkat cells were intracellularly stained with 0.25 ug SMARCA4 Recombinant antibody (83310-2-RR, Clone:240172F4) and APC-Conjugated AffiniPure Goat Anti-Rabbit IgG(H+L) (red), or 0.25 ug Isotype Control (blue). Cells were fixed and permeabilized with Transcription Factor Staining Buffer Kit (PF00011). This data was developed using the same antibody clone with 83310-2-PBS in a different storage buffer formulation.

Immunohistochemical analysis of paraffin-embedded rat lung tissue slide using 83310-2-RR (SMARCA4 antibody) at dilution of 1:4000 (under 40x lens). Heat mediated antigen retrieval with Tris-EDTA buffer (pH 9.0). This data was developed using the same antibody clone with 83310-2-PBS in a different storage buffer formulation.



Cytometric bead array standard curve of MP00334-1, SMARCA4 Recombinant Matched Antibody Pair, PBS Only. Capture antibody: 83310-1-PBS. Detection antibody: 83310-2-PBS. Standard: Ag16256. Range: 0.313-40 ng/mL.

Immunofluorescent analysis of (4% PFA) fixed HepG2 cells using SMARCA4 antibody (83310-2-RR, Clone: 240172F4) at dilution of 1:250 and CoraLite®488-Conjugated AffiniPure Goat Anti-Rabbit IgG(H+L) (SA00013-2), CL594-Phalloidin (red). This data was developed using the same antibody clone with 83310-2-PBS in a different storage buffer formulation.



Bi-layer interferometry (BLI) kinetic assays of 83310-2-RR against Human SMARCA4 were performed. The affinity constant is 3.66 nM.