

# CD22 Recombinant antibody, PBS Only

Catalog Number: **83303-1-PBS**

## Basic Information

**Catalog Number:**

83303-1-PBS

**Size:**

1mg/ml

**Source:**

Rabbit

**Isotype:**

IgG

**GenBank Accession Number:**

NM\_001771.4

**GeneID (NCBI):**

933

**UNIPROT ID:**

P20273

**Full Name:**

CD22 molecule

**Calculated MW:**

95kd

**Purification Method:**

Protein A purification

**CloneNo.:**

230550C11

## Applications

**Tested Applications:**

Indirect ELISA, WB

**Species Specificity:**

human

## Background Information

CD22, also known as Siglec-2 (sialic acid binding Ig-like lectin 2) or BL-CAM (B-lymphocyte cell adhesion molecule), is a 130-140 kDa, B-cell restricted, type I transmembrane glycoprotein belonging to the immunoglobulin gene superfamily. The expression of CD22 is developmentally regulated. It is expressed at low levels in the cytoplasm of pro-B and pre-B cells and present on the cell surface only at mature stages of B-cell differentiation. Cell surface expression is lost during terminal differentiation into plasma cell and after B-cell activation. CD22 is an inhibitory receptor for B-cell receptor (BCR) signalling, preferentially binds to alpha-2,6-linked sialic acid and mediates B-cell B-cell interactions. It plays a crucial role in activation and differentiation of the B-cell.

## Storage

**Storage:**

Store at -80°C.

**The product is shipped with ice packs. Upon receipt, store it immediately at -80°C**

**Storage Buffer:**

PBS Only

For technical support and original validation data for this product please contact:

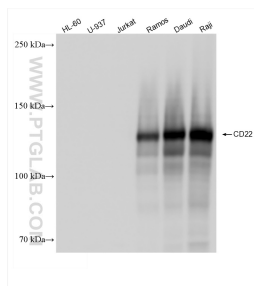
T: 4006900926

E: [Proteintech-CN@ptglab.com](mailto:Proteintech-CN@ptglab.com)

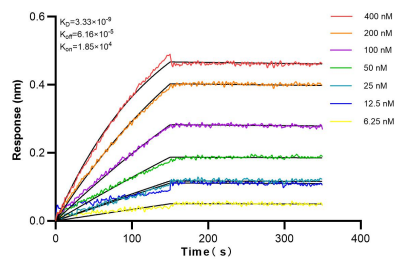
W: [ptgcn.com](http://ptgcn.com)

**This product is exclusively available under Proteintech Group brand and is not available to purchase from any other manufacturer.**

## Selected Validation Data



Various lysates were subjected to SDS PAGE followed by western blot with 83303-1-RR (CD22 antibody) at dilution of 1:10000 incubated at room temperature for 1.5 hours. This data was developed using the same antibody clone with 83303-1-PBS in a different storage buffer formulation.



Biolayer interferometry (BLI) kinetic assays of 83303-1-RR against Human CD22 were performed. The affinity constant is 3.33 nM.