

For Research Use Only

# STX1B Recombinant antibody, PBS Only (Detector)



Catalog Number: 83298-4-PBS

## Basic Information

Catalog Number:	83298-4-PBS	GenBank Accession Number:	BC062298	Purification Method:	Protein A purification
Size:	1mg/ml	GeneID (NCBI):	112755	CloneNo.:	240156F6
Source:	Rabbit	UNIPROT ID:	P61266		
Isotype:	IgG	Full Name:	syntaxin 1B		
Immunogen Catalog Number:	AG10275	Calculated MW:	288 aa, 33 kDa		

## Applications

**Tested Applications:**  
Cytometric bead array, Sandwich ELISA, Indirect ELISA, Sample test

**Species Specificity:**  
human

## Background Information

### Storage

**Storage:**  
Store at -80°C.  
**The product is shipped with ice packs. Upon receipt, store it immediately at -80°C**

**Storage Buffer:**  
PBS Only

For technical support and original validation data for this product please contact:

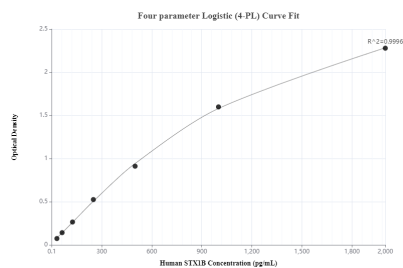
T: 4006900926

E: [Proteintech-CN@ptglab.com](mailto:Proteintech-CN@ptglab.com)

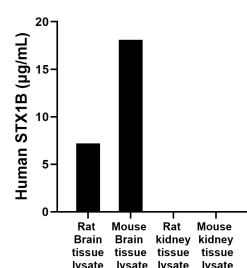
W: [ptgcn.com](http://ptgcn.com)

**This product is exclusively available under Proteintech Group brand and is not available to purchase from any other manufacturer.**

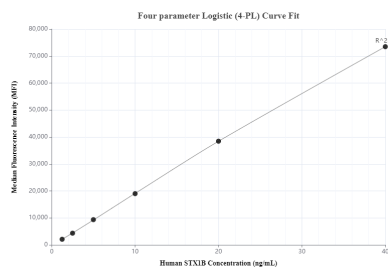
## Selected Validation Data



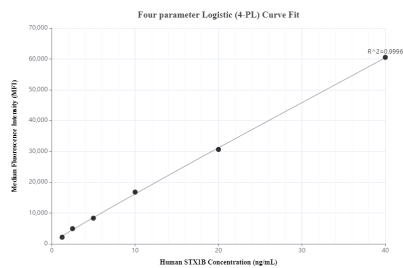
Sandwich ELISA standard curve of MP00312-1, Human STX1B Monoclonal Matched Antibody Pair - PBS only. 83298-1-PBS was coated to a plate as the capture antibody and incubated with serial dilutions of standard Ag10275. 83298-4-PBS was HRP conjugated as the detection antibody. Range: 31.25-2000 pg/mL.



The mean human STX1B concentration was determined to be 7.2 µg/mL in rat Brain tissue lysate based on a 3.0 mg/mL extract load. The mean human STX1B concentration was determined to be 18.1 µg/mL in mouse Brain tissue lysate based on a 2 mg/mL extract load. The mean human STX1B concentration was determined to be 7.0 ng/mL in rat kidney tissue lysate based on a 3 mg/mL extract load. The mean human STX1B concentration was determined to be 15.1



Cytometric bead array standard curve of MP00312-1, STX1B Recombinant Matched Antibody Pair, PBS Only. Capture antibody: 83298-1-PBS. Detection antibody: 83298-4-PBS. Standard: Ag10275. Range: 1.25-40 ng/mL.



Cytometric bead array standard curve of MP00312-2, STX1B Recombinant Matched Antibody Pair, PBS Only. Capture antibody: 83298-5-PBS. Detection antibody: 83298-4-PBS. Standard: Ag10275. Range: 1.25-40 ng/mL.