

For Research Use Only

# STX1B Recombinant antibody, PBS Only (Capture)



Catalog Number: 83298-1-PBS

## Basic Information

Catalog Number: 83298-1-PBS	GenBank Accession Number: BC062298	Purification Method: Protein A purification
Size: 1mg/ml	GeneID (NCBI): 112755	CloneNo.: 240156B9
Source: Rabbit	UNIPROT ID: P61266	
Isotype: IgG	Full Name: syntaxin 1B	
Immunogen Catalog Number: AG10275	Calculated MW: 288 aa, 33 kDa	

## Applications

**Tested Applications:**  
WB, IF/ICC, Cytometric bead array, Sandwich ELISA, Indirect ELISA, Sample test

**Species Specificity:**  
human, mouse

## Background Information

### Storage

**Storage:**  
Store at -80°C.  
**The product is shipped with ice packs. Upon receipt, store it immediately at -80°C**

**Storage Buffer:**  
PBS Only

For technical support and original validation data for this product please contact:

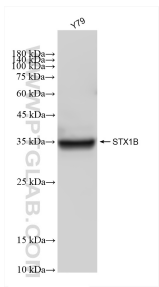
T: 4006900926

E: [Proteintech-CN@ptglab.com](mailto:Proteintech-CN@ptglab.com)

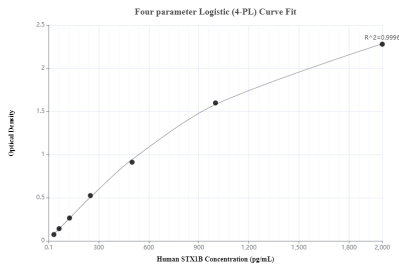
W: [ptgcn.com](http://ptgcn.com)

**This product is exclusively available under Proteintech Group brand and is not available to purchase from any other manufacturer.**

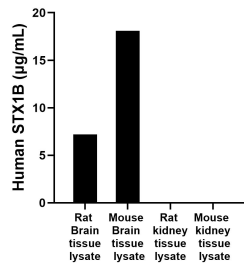
Selected Validation Data



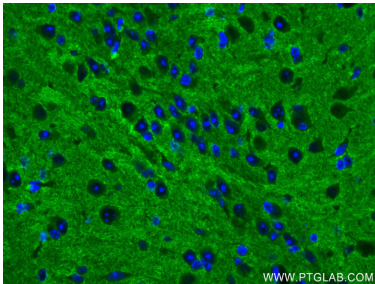
Y79 cells were subjected to SDS PAGE followed by western blot with 83298-1-RR (STX1B antibody) at dilution of 1:20000 incubated at room temperature for 1.5 hours. This data was developed using the same antibody clone with 83298-1-PBS in a different storage buffer formulation.



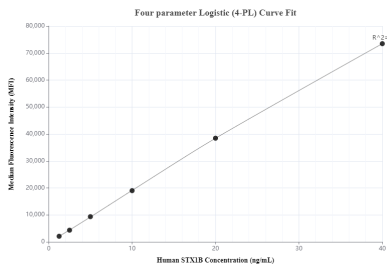
Sandwich ELISA standard curve of MP00312-1, Human STX1B Monoclonal Matched Antibody Pair - PBS only. 83298-1-PBS was coated to a plate as the capture antibody and incubated with serial dilutions of standard Ag10275. 83298-4-PBS was HRP conjugated as the detection antibody. Range: 31.25-2000 pg/mL



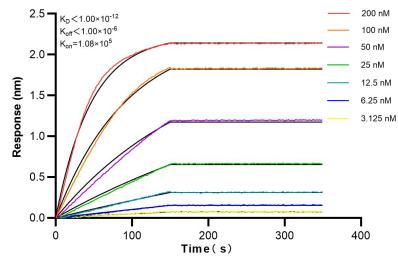
The mean human STX1B concentration was determined to be 7.2 µg/mL in rat Brain tissue lysate based on a 3.0 mg/mL extract load. The mean human STX1B concentration was determined to be 18.1 µg/mL in mouse Brain tissue lysate based on a 2 mg/mL extract load. The mean human STX1B concentration was determined to be 7.0 ng/mL in rat kidney tissue lysate based on a 3 mg/mL extract load. The mean human STX1B concentration was determined to be 15.1



Immunofluorescent analysis of (4% PFA) fixed mouse brain tissue using STX1B antibody (83298-1-RR, Clone: 240156B9 ) at dilution of 1:1000 and CoraLite®488-Conjugated AffiniPure Goat Anti-Rabbit IgG(H+L) (SA00013-2). This data was developed using the same antibody clone with 83298-1-PBS in a different storage buffer formulation.



Cytometric bead array standard curve of MP00312-1, STX1B Recombinant Matched Antibody Pair, PBS Only. Capture antibody: 83298-1-PBS. Detection antibody: 83298-4-PBS. Standard: Ag10275. Range: 1.25-40 ng/mL



Bi-layer interferometry (BLI) kinetic assays of 83298-1-RR against Human STX1B were performed. The affinity constant is below 1 pM.