

For Research Use Only

Mouse CD14 Recombinant antibody, PBS Only (Capture)

Catalog Number: 83297-7-PBS



Basic Information

Catalog Number:

83297-7-PBS

Size:

1 mg/ml

Source:

Rabbit

Isotype:

IgG

GenBank Accession Number:

NM_009841.4

GeneID (NCBI):

12475

UNIPROT ID:

P10810

Full Name:

CD14 antigen

Calculated MW:

39 kDa

Purification Method:

Protein A purification

CloneNo.:

240225F2

Applications

Tested Applications:

IF/ICC, Sandwich ELISA, Indirect ELISA, Sample test

Species Specificity:

mouse

Background Information

CD14 is a 50-55 kDa glycosylphosphatidylinositol-anchored glycoprotein preferentially expressed on monocytes and macrophages, and at lower levels on granulocytes (PMID: 3385210; 2462937; 7685797). CD14 can also exist as a soluble protein. CD14 acts as a co-receptor for bacterial liposaccharides (LPS) (PMID: 1698311). It plays a major role in the inflammatory response of monocytes to LPS.

Storage

Storage:

Store at -80°C.

The product is shipped with ice packs. Upon receipt, store it immediately at -80°C

Storage Buffer:

PBS Only

For technical support and original validation data for this product please contact:

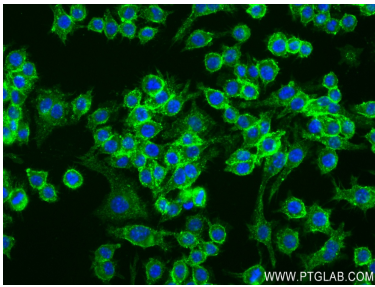
T: 4006900926

E: Proteintech-CN@ptglab.com

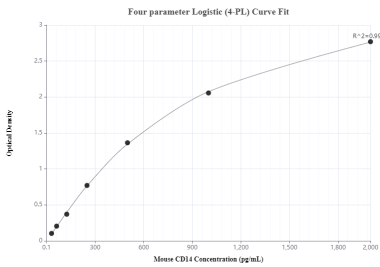
W: ptgcn.com

This product is exclusively available under Proteintech Group brand and is not available to purchase from any other manufacturer.

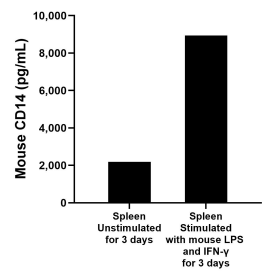
Selected Validation Data



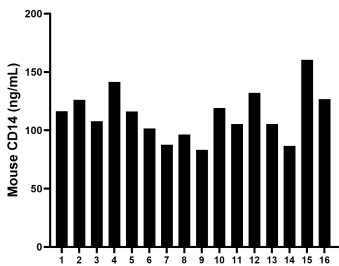
Immunofluorescent analysis of (4% PFA) fixed RAW 264.7 cells using CD14 antibody (83297-7-RR, Clone: 240225F2) at dilution of 1:250 and CoraLite®488-Conjugated AffiniPure Goat Anti-Rabbit IgG(H+L) (SA00013-2). This data was developed using the same antibody clone with 83297-7-PBS in a different storage buffer formulation.



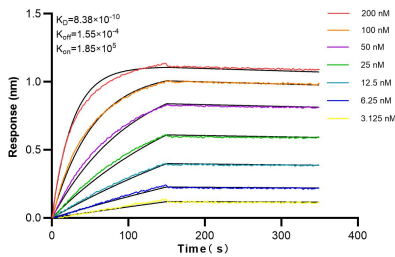
Sandwich ELISA standard curve of MP00313-4, Mouse CD14 Monoclonal Matched Antibody Pair - PBS only. 83297-7-PBS was coated to a plate as the capture antibody and incubated with serial dilutions of standard Eg0847. 83297-1-PBS was HRP conjugated as the detection antibody. Range: 31.25-2000 pg/mL



Mouse splenocytes (1 x 10⁶ cells/mL) were cultured for 3 days in RPMI supplemented with 10% fetal calf serum, 100 ng/mL of recombinant mouse IFN- γ and 1 μ g/mL of LPS. The mean CD-14 concentration was determined to be 2,187.4 pg/mL in unstimulated spleen, 8,939.2 pg/mL in IFN- γ and LPS stimulated spleen supernatant.



Serum of sixteen mice was measured. The CD14 concentration of detected samples was determined to be 113.29 ng/mL with a range of 83.24-160.50 ng/mL.



Biolayer interferometry (BLI) kinetic assays of 83297-7-RR against Mouse CD14 were performed. The affinity constant is 0.838 nM.