

# CD14 Recombinant antibody

Catalog Number: 83297-6-RR

## Basic Information

**Catalog Number:**

83297-6-RR

**Size:**

1000 µg/ml

**Source:**

Rabbit

**Isotype:**

IgG

**GenBank Accession Number:**

NM\_009841.4

**GeneID (NCBI):**

12475

**UNIPROT ID:**

P10810

**Full Name:**

CD14 antigen

**Calculated MW:**

39 kDa

**Purification Method:**

Protein A purification

**CloneNo.:**

240225F4

**Recommended Dilutions:**

IF/ICC 1:125-1:500

## Applications

**Tested Applications:**

IF/ICC, ELISA

**Species Specificity:**

Mouse

**Positive Controls:**

IF/ICC : RAW 264.7 cells,

## Background Information

CD14 is a 50-55 kDa glycosylphosphatidylinositol-anchored glycoprotein preferentially expressed on monocytes and macrophages, and at lower levels on granulocytes (PMID: 3385210; 2462937; 7685797). CD14 can also exist as a soluble protein. CD14 acts as a co-receptor for bacterial liposaccharides (LPS) (PMID: 1698311). It plays a major role in the inflammatory response of monocytes to LPS.

## Storage

**Storage:**

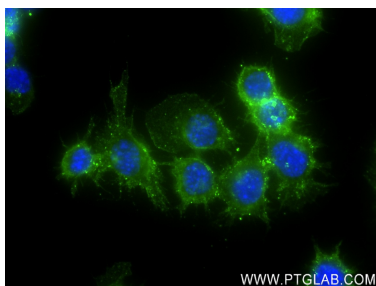
Store at -20°C. Stable for one year after shipment.

**Storage Buffer:**

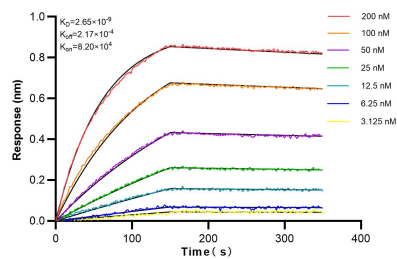
PBS with 0.02% sodium azide and 50% glycerol pH 7.3.

Aliquoting is unnecessary for -20°C storage

## Selected Validation Data



Immunofluorescent analysis of (4% PFA) fixed RAW 264.7 cells using CD14 antibody (83297-6-RR, Clone: 240225F4) at dilution of 1:250 and CoraLite®488-Conjugated AffiniPure Goat Anti-Mouse IgG(H+L) (SA00013-1).



Biolayer interferometry (BLI) kinetic assays of 83297-6-RR against Mouse CD14 were performed. The affinity constant is 2.65 nM.