

For Research Use Only

# Mouse HO-1/Hmox1 Recombinant antibody, PBS Only (Detector)

Catalog Number: 83291-2-PBS



## Basic Information

Catalog Number:

83291-2-PBS

Size:

1mg/ml

Source:

Rabbit

Isotype:

IgG

GenBank Accession Number:

NM\_010442.2

GeneID (NCBI):

15368

UNIPROT ID:

P14901

Full Name:

heme oxygenase (decycling) 1

Calculated MW:

33 kDa

Purification Method:

Protein A purification

CloneNo.:

240236G6

## Applications

Tested Applications:

Cytometric bead array, Sandwich ELISA, Indirect ELISA, Sample test

Species Specificity:

mouse

## Background Information

### Storage

Storage:

Store at -80°C.

**The product is shipped with ice packs. Upon receipt, store it immediately at -80°C**

Storage Buffer:

PBS Only

For technical support and original validation data for this product please contact:

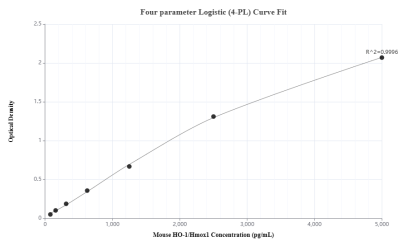
T: 4006900926

E: [Proteintech-CN@ptglab.com](mailto:Proteintech-CN@ptglab.com)

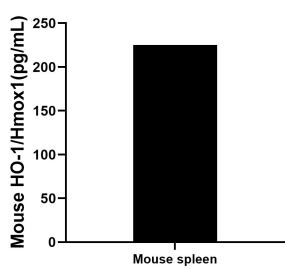
W: [ptgcn.com](http://ptgcn.com)

**This product is exclusively available under Proteintech Group brand and is not available to purchase from any other manufacturer.**

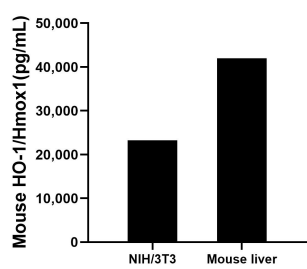
Selected Validation Data



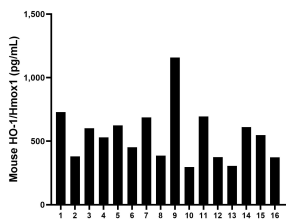
Sandwich ELISA standard curve of MP00318-3, mouse HO-1/Hmox Recombinant Matched Antibody Pair - PBS only. 83291-4-PBS was coated to a plate as the capture antibody and incubated with serial dilutions of standard: Eg0938. 83291-2-PBS was HRP conjugated as the detection antibody. Range: 78.1-5000 pg/mL



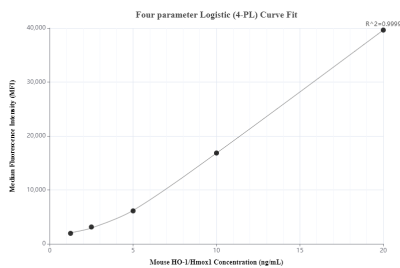
Mouse spleen tissue (3 spleen in 1-2 mm pieces in 100 mL of medium) was cultured in RPMI supplemented with 10% fetal bovine serum, 50  $\mu$  M  $\beta$ -mercaptoethanol, 2 mM L-glutamine, 100 U/mL penicillin, and 100  $\mu$  g/mL streptomycin sulfate. An aliquot of the cell culture supernatant was removed, assayed for mouse HO-1/Hmox1, and measured 225.2 pg/mL.



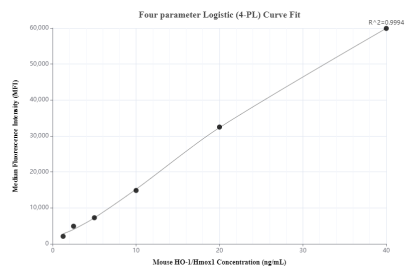
The mean mouse HO-1/Hmox1 concentration was determined to be 23,262.0 pg/mL in NIH/3T3 cell extract based on a 7.8 mg/mL extract load and 41,977.1 pg/mL in mouse liver extract based on a 5 mg/mL extract load.



Serum of sixteen mice was measured. The mouse HO-1/Hmox1 concentration of detected samples was determined to be 547.1 pg/mL with a range of 297.1 - 1,158.6 pg/mL.



Cytometric bead array standard curve of MP00318-1, MOUSE HO-1/Hmox1 Recombinant Matched Antibody Pair, PBS Only. Capture antibody: 83291-1-PBS. Detection antibody: 83291-2-PBS. Standard: Eg0938. Range: 1.25-20 ng/mL



Cytometric bead array standard curve of MP00318-2, MOUSE HO-1/Hmox1 Recombinant Matched Antibody Pair, PBS Only. Capture antibody: 83291-3-PBS. Detection antibody: 83291-2-PBS. Standard: Eg0938. Range: 1.25-20 ng/mL