

# Albumin Recombinant antibody

Catalog Number: 83289-4-RR

## Basic Information

**Catalog Number:**

83289-4-RR

**Size:**

1000 µg/ml

**Source:**

Rabbit

**Isotype:**

IgG

**GenBank Accession Number:**

NM\_009654.4

**GeneID (NCBI):**

11657

**UNIPROT ID:**

P07724

**Full Name:**

albumin

**Calculated MW:**

69 kDa

**Observed MW:**

66 kDa

**Purification Method:**

Protein A purification

**CloneNo.:**

240245E1

**Recommended Dilutions:**

WB 1:5000-1:50000

## Applications

**Tested Applications:**

WB, ELISA

**Species Specificity:**

mouse

**Positive Controls:**

WB : mouse retina tissue, mouse liver tissue, mouse cerebellum

## Background Information

Albumin is the most abundant protein in blood plasma. Alterations of level of serum albumin are linked to variety of diseases. Albumin is expressed exclusively by well-differentiated hepatocytes, thus anti-albumin has been used to mark hepatocytes. In addition, glycated serum albumin is also a potential diabetes biomarker. The N-terminal 24aa of albumin will be cleaved to generate the mature form of serum albumin with MW 66 kDa. (21388516, 23832071)

## Storage

**Storage:**

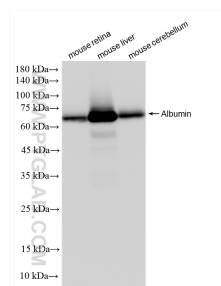
Store at -20°C. Stable for one year after shipment.

**Storage Buffer:**

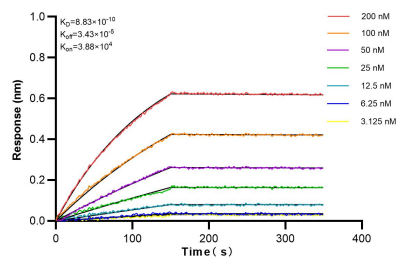
PBS with 0.02% sodium azide and 50% glycerol pH 7.3.

Aliquoting is unnecessary for -20°C storage

## Selected Validation Data



Various lysates were subjected to SDS PAGE followed by western blot with 83289-4-RR (Albumin antibody) at dilution of 1:10000 incubated at room temperature for 1.5 hours.



Biolayer interferometry (BLI) kinetic assays of 83289-4-RR against Mouse Albumin were performed. The affinity constant is 0.883 nM.