

For Research Use Only

Mouse Albumin Recombinant antibody, PBS Only (Capture/Detector)

Catalog Number:83289-3-PBS



Basic Information

Catalog Number: 83289-3-PBS	GenBank Accession Number: NM_009654.4	Purification Method: Protein A purification
Concentration: 1000 µg/ml	GeneID (NCBI): 11657	CloneNo.: 240245F8
Source: Rabbit	UNIPROT ID: P07724	
Isotype: IgG	Full Name: albumin	
Immunogen Catalog Number: EG0886	Calculated MW: 69 kDa	

Applications

Tested Applications:
Cytometric bead array, Sandwich ELISA, Indirect ELISA,
Sample test

Species Specificity:
mouse

Background Information

Storage

Storage:
Store at -80°C.
The product is shipped with ice packs. Upon receipt, store it immediately at -80°C

Storage Buffer:
PBS only, pH7.3

For technical support and original validation data for this product please contact:

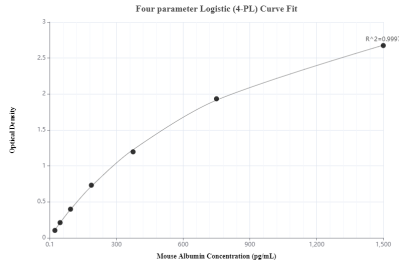
T: 4006900926

E: Proteintech-CN@ptglab.com

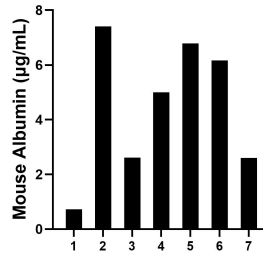
W: ptgcn.com

This product is exclusively available under Proteintech Group brand and is not available to purchase from any other manufacturer.

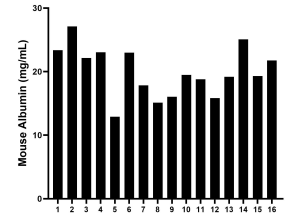
Selected Validation Data



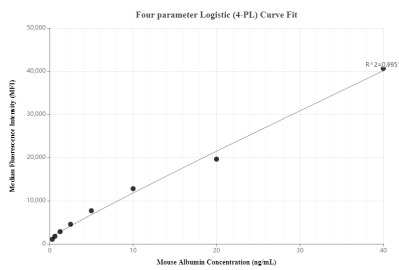
Sandwich ELISA standard curve of MP00329-4, Mouse Albumin Recombinant Matched Antibody Pair - PBS only. 83289-5-PBS was coated to a plate as the capture antibody and incubated with serial dilutions of standard Eg0886. 83289-3-PBS was HRP conjugated as the detection antibody. Range: 23.4-1500 pg/mL



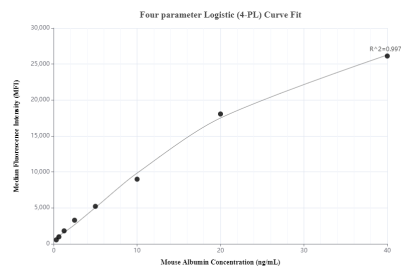
Urine of seven mice was measured. The Albumin concentration of detected samples was determined to be 4.5 µg/mL with a range of 0.7-7.4 µg/mL.



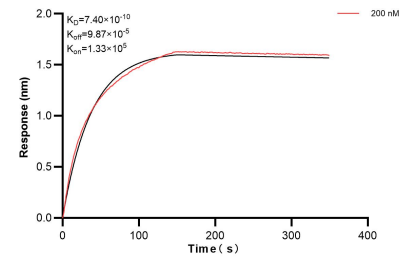
Serum of sixteen mice was measured. The Albumin concentration of detected samples was determined to be 20.0 mg/mL with a range of 12.9-27.1 mg/mL.



Cytometric bead array standard curve of MP00329-1, MOUSE Albumin Recombinant Matched Antibody Pair, PBS Only. Capture antibody: 83289-1-PBS. Detection antibody: 83289-3-PBS. Standard: Eg0886. Range: 0.313-40 ng/mL



Cytometric bead array standard curve of MP00329-3, MOUSE Albumin Recombinant Matched Antibody Pair, PBS Only. Capture antibody: 83289-3-PBS. Detection antibody: 83289-2-PBS. Standard: Eg0886. Range: 0.313-40 ng/mL



Bi-layer interferometry (BLI) kinetic assay of 83289-3-PBS against Mouse Albumin was performed. The affinity constant is 0.74 nM.