

For Research Use Only

NUP85 Recombinant antibody, PBS Only (Detector)

Catalog Number: 83288-1-PBS



Basic Information

Catalog Number: 83288-1-PBS	GenBank Accession Number: BC000697	Purification Method: Protein A purification
Concentration: 1mg/ml	GeneID (NCBI): 79902	CloneNo.: 240116A2
Source: Rabbit	UNIPROT ID: Q9BW27	
Isotype: IgG	Full Name: nucleoporin 85kDa	
Immunogen Catalog Number: AG7086	Calculated MW: 75 kDa	

Applications

Tested Applications:
IF/ICC, FC (Intra), Cytometric bead array, Sandwich
ELISA, Indirect ELISA, Sample test

Species Specificity:
human

Background Information

This gene encodes a protein component of the Nup107-160 subunit of the nuclear pore complex. NPCs are key for nucleocytoplasmic transport, but also regulate the mitotic machinery, transcription and chromatin organization through transport-independent mechanisms. The NUP107-160 complex is acknowledged to contribute to the assembly and maintenance of the NPC structure. Members of this largest subcomplex of the NPC associate with kinetochores, mitotic spindles, centrosomes and mitotic checkpoint regulators for proper completion of the cell cycle. Downregulation of NUP107-160 subcomplex members resulted in defective cytokinesis, compromised microtubule structures, altered cytoskeletal dynamics, impaired chromosome segregation and differentiation. (PMID:34170319)

Storage

Storage:
Store at -80°C.
The product is shipped with ice packs. Upon receipt, store it immediately at -80°C
Storage Buffer:
PBS only, pH7.3

For technical support and original validation data for this product please contact:

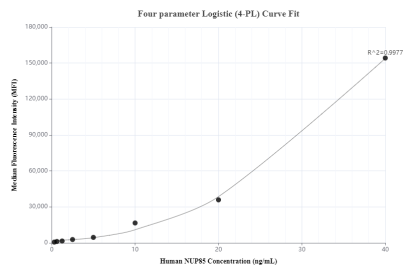
T: 4006900926

E: Proteintech-CN@ptglab.com

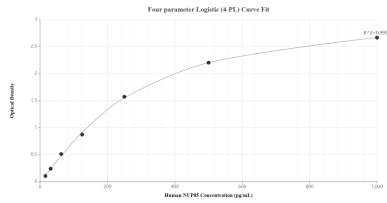
W: ptgcn.com

This product is exclusively available under Proteintech Group brand and is not available to purchase from any other manufacturer.

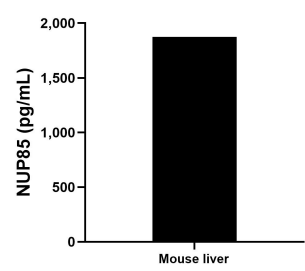
Selected Validation Data



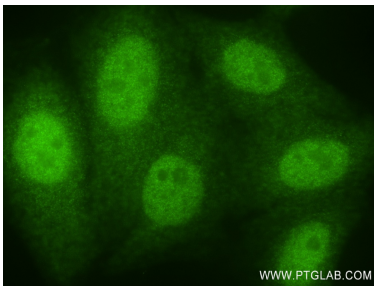
Cytometric bead array standard curve of MP00330-1, NUP85 Recombinant Matched Antibody Pair, PBS Only. Capture antibody: 83288-2-PBS. Detection antibody: 83288-1-PBS. Standard: Ag7086. Range: 0.313-40 ng/mL



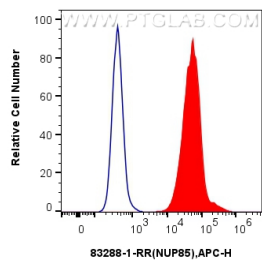
Sandwich ELISA standard curve of MP00330-1, Human NUP85 Recombinant Matched Antibody Pair - PBS only. 83288-2-PBS was coated to a plate as the capture antibody and incubated with serial dilutions of standard Ag7086. 83288-1-PBS was HRP conjugated as the detection antibody. Range: 15.6-1000 pg/mL



The mean NUP85 concentration was determined to be 1,874.5 pg/mL in mouse liver tissue extract based on a 3.0 mg/mL extract load.



Immunofluorescent analysis of (4% PFA) fixed HepG2 cells using NUP85 antibody (83288-1-RR, Clone: 240116A2) at dilution of 1:250 and CoraLite®488-Conjugated AffiniPure Goat Anti-Rabbit IgG(H+L) (SA00013-2). This data was developed using the same antibody clone with 83288-1-PBS in a different storage buffer formulation.



1x10⁶ MCF-7 cells were intracellularly stained with 0.25 ug NUP85 Recombinant antibody (83288-1-RR, Clone:240116A2) and APC-Conjugated AffiniPure Goat Anti-Rabbit IgG(H+L)(red), or 0.25 ug Isotype Control (blue). Cells were fixed and permeabilized with Transcription Factor Staining Buffer Kit (PF00011). This data was developed using the same antibody clone with 83288-1-PBS in a different storage buffer formulation.