

For Research Use Only

IGFBP2 Recombinant antibody, PBS Only (Capture/Detector)



Catalog Number: 83283-2-PBS

Basic Information

Catalog Number:

83283-2-PBS

Size:

1mg/ml

Source:

Rabbit

Isotype:

IgG

GenBank Accession Number:

NM_000597.3

GeneID (NCBI):

3485

UNIPROT ID:

P18065

Full Name:

IGF binding protein 2

Calculated MW:

35 kDa

Purification Method:

Protein A purification

CloneNo.:

240227G3

Applications

Tested Applications:

Cytometric bead array, Sandwich ELISA, Indirect ELISA, Sample test

Species Specificity:

human

Background Information

Storage

Storage:

Store at -80°C.

The product is shipped with ice packs. Upon receipt, store it immediately at -80°C

Storage Buffer:

PBS Only

For technical support and original validation data for this product please contact:

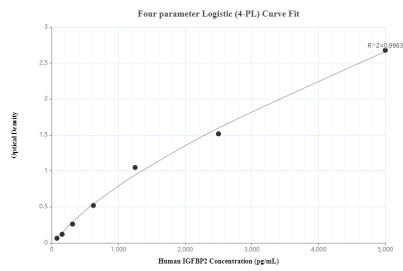
T: 4006900926

E: Proteintech-CN@ptglab.com

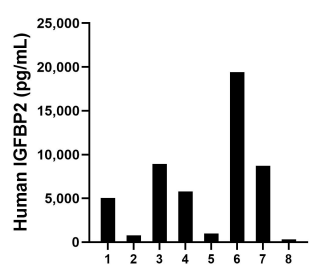
W: ptgcn.com

This product is exclusively available under Proteintech Group brand and is not available to purchase from any other manufacturer.

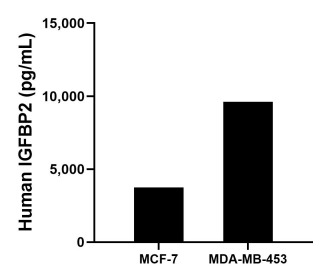
Selected Validation Data



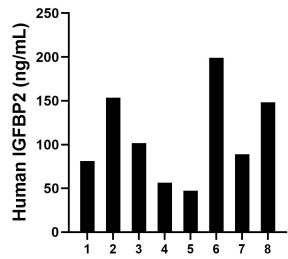
Sandwich ELISA standard curve of MP00322-2, human IGFBP2 Recombinant Matched Antibody Pair - PBS only. 83283-3-PBS was coated to a plate as the capture antibody and incubated with serial dilutions of standard Eg0823. 83283-2-PBS was HRP conjugated as the detection antibody. Range: 78.1-5000 pg/mL



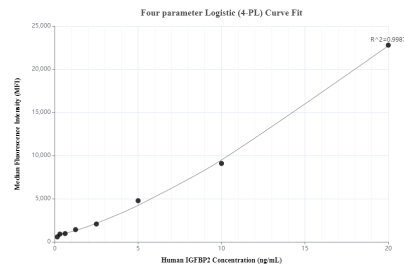
Urine of eight individual healthy human donors was measured. The IGFBP2 concentration of detected samples was determined to be 6251.0 pg/mL with a range of 306.2 - 19423.8 pg/mL



MCF-7 human breast cancer cells (5×10^6 cells/mL) were cultured in DMEM and 10% fetal bovine serum, 4 mM L-glutamine, 4500 mg/L glucose, 100 U/mL penicillin, and 100 μ g/mL streptomycin sulfate. An aliquot of the cell culture supernatants was removed, assayed for human IGFBP2, and measured 3750.9 pg/mL MDA-MB-453 human breast carcinoma cells (5×10^6 cells/mL) were cultured in DMEM supplemented with 10% fetal bovine serum, 2.5 mM L-glutamine, 100



Serum of eight individual healthy human donors was measured. The IGFBP2 concentration of detected samples was determined to be 109.5 ng/mL with a range of 47.4 - 199.1 ng/mL



Cytometric bead array standard curve of MP00322-1, IGFBP2 Recombinant Matched Antibody Pair, PBS Only. Capture antibody: 83283-2-PBS. Detection antibody: 83283-1-PBS. Standard: Eg0823. Range: 0.156-20 ng/mL