

For Research Use Only

NOD2 Recombinant antibody, PBS Only (Detector)

Catalog Number: 83281-3-PBS



Basic Information

Catalog Number:

83281-3-PBS

Concentration:

1mg/ml

Source:

Rabbit

Isotype:

IgG

Immunogen Catalog Number:

AG33771

GenBank Accession Number:

NM_001293557

GeneID (NCBI):

64127

UNIPROT ID:

Q9HC29

Full Name:

nucleotide-binding oligomerization
domain containing 2

Calculated MW:

115 kDa

Purification Method:

Protein A purification

CloneNo.:

230327E10

Applications

Tested Applications:

IF/ICC, FC (Intra), Cytometric bead array, Indirect
ELISA

Species Specificity:

human

Background Information

Storage

Storage:

Store at -80°C.

The product is shipped with ice packs. Upon receipt, store it immediately at -80°C

Storage Buffer:

PBS only

For technical support and original validation data for this product please contact:

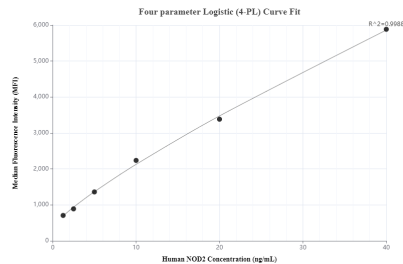
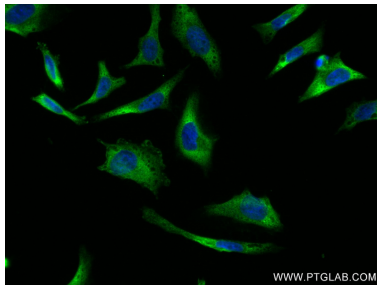
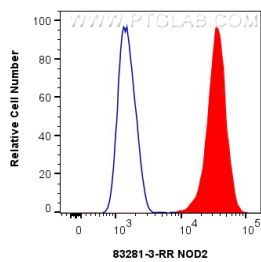
T: 4006900926

E: Proteintech-CN@ptglab.com

W: ptgcn.com

This product is exclusively available under Proteintech Group brand and is not available to purchase from any other manufacturer.

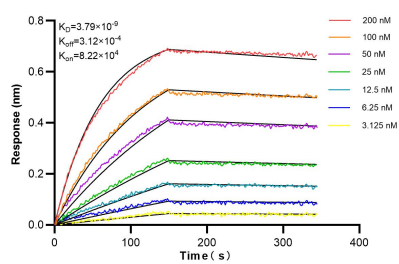
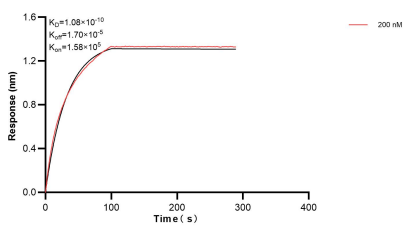
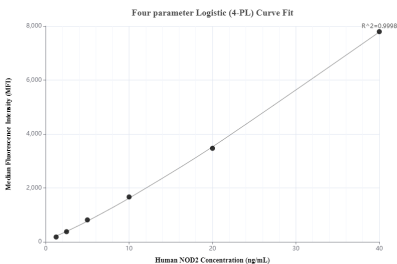
Selected Validation Data



1x10⁶ Jurkat cells were intracellularly stained with 0.25 ug Nod2 Recombinant Antibody (83281-3-RR, Clone:230327E10) and CoraLite®488-Conjugated Goat Anti-Rabbit IgG(H+L) (SA00013-2)(red), or 0.25 ug Rabbit IgG Isotype Control RecAb (98136-1-RR, Clone: 240953C9) (blue). Cells were fixed with 4% PFA and permeabilized with Flow Cytometry Perm Buffer (PF00011-C). This data was developed using the same antibody clone with 83281-3-PBS in a different storage buffer

Immunofluorescent analysis of (4% PFA) fixed HeLa cells using NOD2 antibody (83281-3-RR, Clone: 230327E10) at dilution of 1:200 and CoraLite®488-Conjugated AffiniPure Goat Anti-Rabbit IgG(H+L) (SA00013-2). This data was developed using the same antibody clone with 83281-3-PBS in a different storage buffer formulation.

Cytometric bead array standard curve of MP00320-1, NOD2 Recombinant Matched Antibody Pair, PBS Only. Capture antibody: 83281-1-PBS. Detection antibody: 83281-3-PBS. Standard: Ag33771. Range: 1.25-40 ng/mL



Cytometric bead array standard curve of MP00320-2, NOD2 Recombinant Matched Antibody Pair, PBS Only. Capture antibody: 83281-4-PBS. Detection antibody: 83281-3-PBS. Standard:Ag33771. Range: 1.25-40 ng/mL

Biolayer interferometry (BLI) kinetic assay of 83281-3-PBS against Human NOD2 was performed. The affinity constant is 0.108 nM.

Biolayer interferometry (BLI) kinetic assays of 83281-3-RR against Human NOD2 were performed. The affinity constant is 3.79 nM.