

For Research Use Only

EPHB2 Recombinant antibody

Catalog Number: 83277-1-RR **1 Publications**



Basic Information

Catalog Number: 83277-1-RR	GenBank Accession Number: BC018763	Purification Method: Protein A purification
Size: 1000 ug/ml	GeneID (NCBI): 2048	CloneNo.: 230111A5
Source: Rabbit	UNIPROT ID: P29323	Recommended Dilutions: WB 1:500-1:1000
Isotype: IgG	Full Name: EPH receptor B2	
Immunogen Catalog Number: AG28786	Calculated MW: 987 aa, 108 kDa	
	Observed MW: 120 kDa	

Applications

Tested Applications: WB, ELISA	Positive Controls: WB : HepG2 cells, U-251 cells
Cited Applications: WB	
Species Specificity: human	
Cited Species: human	

Background Information

Notable Publications

Author	Pubmed ID	Journal	Application
Rong Xu	39153969	J Exp Clin Cancer Res	WB

Storage

Storage:
Store at -20°C. Stable for one year after shipment.
Storage Buffer:
PBS with 0.02% sodium azide and 50% glycerol pH 7.3.
Aliquoting is unnecessary for -20°C storage

For technical support and original validation data for this product please contact:

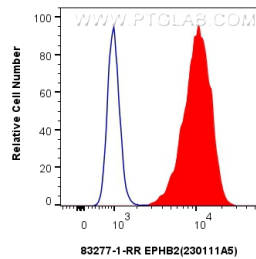
T: 4006900926

E: Proteintech-CN@ptglab.com

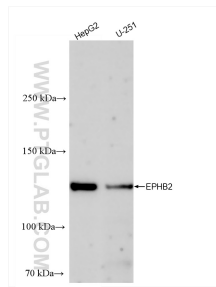
W: ptgcn.com

This product is exclusively available under Proteintech Group brand and is not available to purchase from any other manufacturer.

Selected Validation Data



1x10⁶ HepG2 cells were intracellularly stained with 0.25 ug EPHB2 Recombinant antibody (83277-1-RR, Clone:230111A5) and CoraLite®488-Conjugated Goat Anti-Rabbit IgG(H+L) (SA00013-2) (red), or 0.25 ug Rabbit IgG Isotype Control Recombinant Antibody (98136-1-RR, Clone:240953C9) (blue). Cells were fixed with 4% PFA and permeabilized with Flow Cytometry Perm Buffer (PF00011-C).



Various lysates were subjected to SDS PAGE followed by western blot with 83277-1-RR (EPHB2 antibody) at dilution of 1:500 incubated at room temperature for 1.5 hours.