

For Research Use Only

# Cytochrome c Recombinant antibody, PBS Only (Capture/Detector)

Catalog Number: 83276-5-PBS



## Basic Information

Catalog Number:

83276-5-PBS

Concentration:

1 mg/ml

Source:

Rabbit

Isotype:

IgG

Immunogen Catalog Number:

AG1455

GenBank Accession Number:

BC009578

GeneID (NCBI):

54205

UNIPROT ID:

P99999

Full Name:

cytochrome c, somatic

Calculated MW:

12 kDa

Purification Method:

Protein A purification

CloneNo.:

230503G9

## Applications

Tested Applications:

Cytometric bead array, Sandwich ELISA, Indirect ELISA,  
Sample test

Species Specificity:

human

## Background Information

### Storage

Storage:

Store at -80°C.

**The product is shipped with ice packs. Upon receipt, store it immediately at -80°C**

Storage Buffer:

PBS only, pH7.3

For technical support and original validation data for this product please contact:

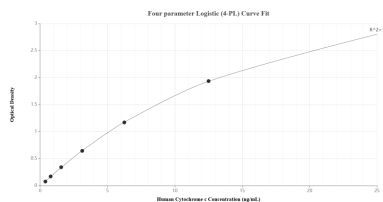
T: 4006900926

E: [Proteintech-CN@ptglab.com](mailto:Proteintech-CN@ptglab.com)

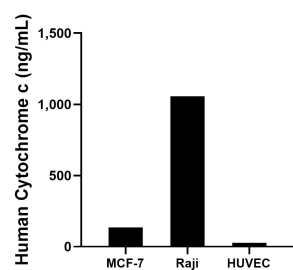
W: [ptgcn.com](http://ptgcn.com)

**This product is exclusively available under Proteintech Group brand and is not available to purchase from any other manufacturer.**

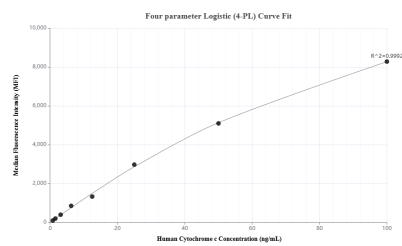
## Selected Validation Data



Sandwich ELISA standard curve of MP01934-3, Human Cytochrome c Recombinant Matched Antibody Pair - PBS only. 83276-5-PBS was coated to a plate as the capture antibody and incubated with serial dilutions of standard Ag1455. 83276-6-PBS was HRP conjugated as the detection antibody. Range: 0.391-25 ng/mL



The mean Cytochrome c concentration was determined to be 135.89 ng/mL in MCF-7 cell extract based on a 1.30 mg/mL extract load, 1,056.51 ng/mL in Raji cell extract based on a 3.00 mg/mL extract load and 26.74 ng/mL in HUVEC cell extract based on a 1.40 mg/mL extract load.



Cytometric bead array standard curve of MP01934-1, Cytochrome c Recombinant Matched Antibody Pair, PBS Only. Capture antibody: 83276-4-PBS. Detection antibody: 83276-5-PBS. Standard: Ag1455. Range: 0.781-100 ng/mL