

For Research Use Only

SNAP25 Recombinant antibody, PBS Only

Catalog Number: 83259-5-PBS



Basic Information

Catalog Number:	83259-5-PBS	GenBank Accession Number:	BC010647	Purification Method:	Protein A purification
Size:	1 mg/ml	GeneID (NCBI):	6616	CloneNo.:	240069F12
Source:	Rabbit	UNIPROT ID:	P60880		
Isotype:	IgG	Full Name:	synaptosomal-associated protein, 25kDa		
Immunogen Catalog Number:	AG6695	Calculated MW:	23 kDa		
		Observed MW:	25 kDa		

Applications

Tested Applications:
WB, IF/ICC, Indirect ELISA

Species Specificity:
human, mouse, rat

Background Information

The synaptosomal associated protein of 25 kD (SNAP-25) was first identified as a major synaptic protein by Wilson and colleagues. The protein interacts with syntaxin and synaptobrevin through its N-terminal and C-terminal - helical domains. Its palmitoylation domain is located in the middle of the molecule that contains four cysteine residues. Mutation of the cysteines abolishes palmitoylation and membrane binding. Several elegant studies using synaptosome preparations and permeabilized PC12 cells have suggested that SNAP-25 may act in the late post-docking steps of exocytosis. By limited proteolysis and in vitro binding assay, it is proposed that the two helix domains act independently and contribute equally to form the SNARE complex with syntaxin and synaptobrevin. It seems that a major regulatory element is located in the C-terminus of SNAP-25. Removing a 9 amino acid sequence of SNAP-25 inhibited neurosecretion in chromaffin cells.

Storage

Storage:
Store at -80°C.
The product is shipped with ice packs. Upon receipt, store it immediately at -80°C

Storage Buffer:
PBS Only

For technical support and original validation data for this product please contact:

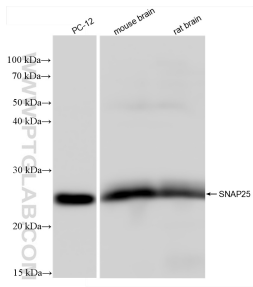
T: 4006900926

E: Proteintech-CN@ptglab.com

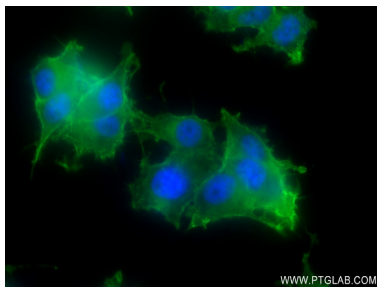
W: ptgcn.com

This product is exclusively available under Proteintech Group brand and is not available to purchase from any other manufacturer.

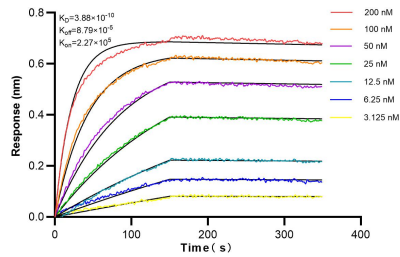
Selected Validation Data



Various lysates were subjected to SDS PAGE followed by western blot with 83259-5-RR (SNAP25 antibody) at dilution of 1:10000 incubated at room temperature for 1.5 hours. This data was developed using the same antibody clone with 83259-5-PBS in a different storage buffer formulation.



Immunofluorescent analysis of (4% PFA) fixed PC-12 cells using SNAP25 antibody (83259-5-RR, Clone: 240069F12) at dilution of 1:250 and CoraLite®488-Conjugated AffiniPure Goat Anti-Mouse IgG(H+L) (SA00013-1). This data was developed using the same antibody clone with 83259-5-PBS in a different storage buffer formulation.



Biolayer interferometry (BLI) kinetic assays of 83259-5-RR against Human SNAP25 were performed. The affinity constant is 0.388 nM.