

For Research Use Only

# Ribophorin I Recombinant antibody

Catalog Number: 83250-2-RR



## Basic Information

Catalog Number:

83250-2-RR

Size:

1000 ug/ml

Source:

Rabbit

Isotype:

IgG

Immunogen Catalog Number:

AG3576

GenBank Accession Number:

BC010839

GeneID (NCBI):

6184

UNIPROT ID:

P04843

Full Name:

ribophorin I

Calculated MW:

69 kDa

Observed MW:

66-69 kDa

Purification Method:

Protein A purification

CloneNo.:

240044D4

Recommended Dilutions:

WB 1:5000-1:50000

IHC 1:250-1:1000

## Applications

Tested Applications:

WB, IHC, FC (Intra), ELISA

Species Specificity:

human, mouse, rat

**Note-IHC: suggested antigen retrieval with TE buffer pH 9.0; (\*) Alternatively, antigen retrieval may be performed with citrate buffer pH 6.0**

Positive Controls:

WB : MCF-7 cells, HeLa cells, HepG2 cells, K-562 cells, mouse liver tissue, rat liver tissue

IHC : human stomach cancer tissue,

## Background Information

### Storage

Storage:

Store at -20°C. Stable for one year after shipment.

Storage Buffer:

PBS with 0.02% sodium azide and 50% glycerol pH 7.3.

Aliquoting is unnecessary for -20°C storage

For technical support and original validation data for this product please contact:

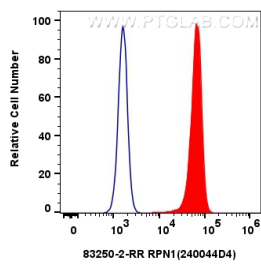
T: 4006900926

E: [Proteintech-CN@ptglab.com](mailto:Proteintech-CN@ptglab.com)

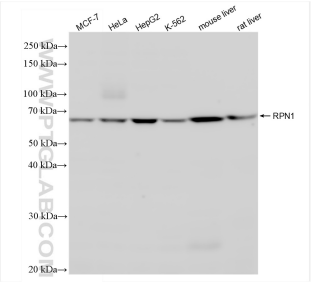
W: [ptgcn.com](http://ptgcn.com)

This product is exclusively available under Proteintech Group brand and is not available to purchase from any other manufacturer.

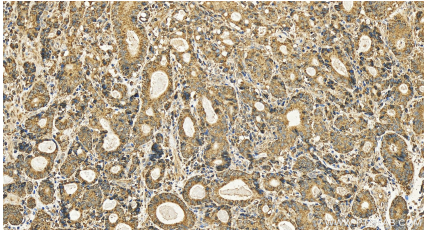
Selected Validation Data



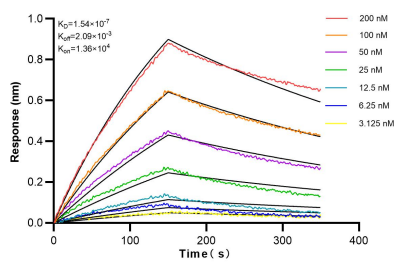
1x10<sup>6</sup> HeLa cells were intracellularly stained with 0.25 ug RPN1 Recombinant antibody (83250-2-RR, Clone:240044D4) and CoraLite®488-Conjugated AffiniPure Goat Anti-Rabbit IgG(H+L) (SA00013-2) (red), or 0.25 ug Isotype Control (blue). Cells were fixed with 4% PFA and permeabilized with Flow Cytometry Perm Buffer (PF00011-C).



Various lysates were subjected to SDS PAGE followed by western blot with 83250-2-RR (RPN1 antibody) at dilution of 1:10000 incubated at room temperature for 1.5 hours.



Immunohistochemical analysis of paraffin-embedded human stomach cancer tissue slide using 83250-2-RR (Ribophorin I antibody) at dilution of 1:500 (under 20x lens). Heat mediated antigen retrieval with Tris-EDTA buffer(pH9).



Biolayer interferometry (BLI) kinetic assays of 83250-2-RR against Human RPN1 were performed. The affinity constant is 0.154 uM.