

For Research Use Only

Ribophorin I Recombinant antibody, PBS Only (Capture/Detector)

Catalog Number: 83250-2-PBS



Basic Information

Catalog Number:

83250-2-PBS

Size:

1mg/ml

Source:

Rabbit

Isotype:

IgG

Immunogen Catalog Number:

AG3576

GenBank Accession Number:

BC010839

GeneID (NCBI):

6184

UNIPROT ID:

P04843

Full Name:

ribophorin I

Calculated MW:

69 kDa

Observed MW:

66-69 kDa

Purification Method:

Protein A purification

CloneNo.:

240044D4

Applications

Tested Applications:

WB, IHC, FC (Intra), Cytometric bead array, Sandwich
ELISA, Indirect ELISA, Sample test

Species Specificity:

human, mouse, rat

Background Information

Storage

Storage:

Store at -80°C.

The product is shipped with ice packs. Upon receipt, store it immediately at -80°C

Storage Buffer:

PBS Only

For technical support and original validation data for this product please contact:

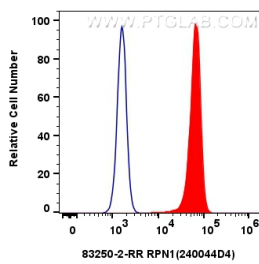
T: 4006900926

E: Proteintech-CN@ptglab.com

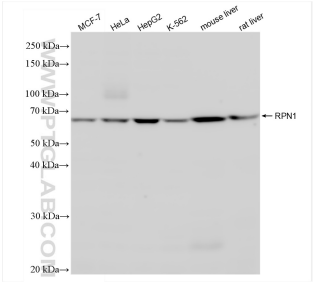
W: ptgcn.com

This product is exclusively available under Proteintech Group brand and is not available to purchase from any other manufacturer.

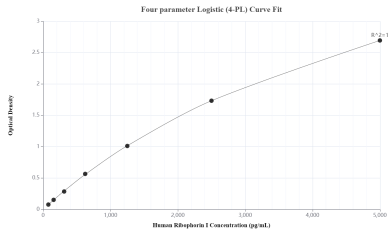
Selected Validation Data



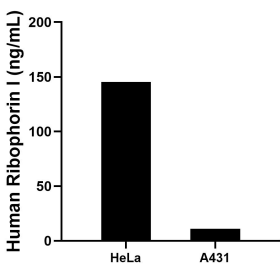
1x10⁶ HeLa cells were intracellularly stained with 0.25 ug RPN1 Recombinant antibody (83250-2-RR, Clone:240044D4) and CoraLite®488-Conjugated AffiniPure Goat Anti-Rabbit IgG(H+L) (SA00013-2) (red), or 0.25 ug Isotype Control (blue). Cells were fixed with 4% PFA and permeabilized with Flow Cytometry Perm Buffer (PF00011-C). This data was developed using the same antibody clone with 83250-2-PBS in a different storage buffer formulation.



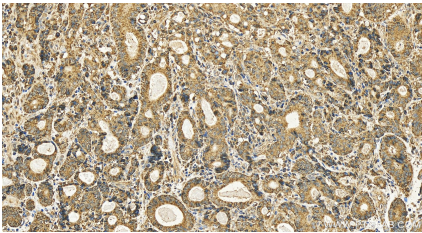
Various lysates were subjected to SDS PAGE followed by western blot with 83250-2-RR (RPN1 antibody) at dilution of 1:10000 incubated at room temperature for 1.5 hours. This data was developed using the same antibody clone with 83250-2-PBS in a different storage buffer formulation.



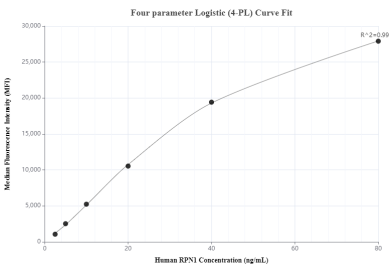
Sandwich ELISA standard curve of MP00231-3, Human Ribophorin I Recombinant Matched Antibody Pair - PBS only. 83250-1-PBS was coated to a plate as the capture antibody and incubated with serial dilutions of standard Ag3576. 83250-2-PBS was HRP conjugated as the detection antibody. Range: 78.1-5000 pg/mL.



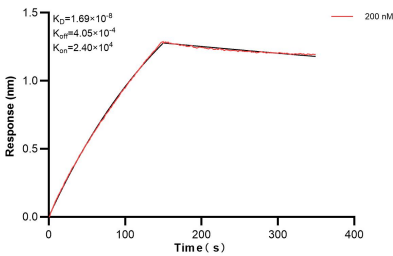
The mean Ribophorin I concentration was determined to be 145.4 ng/mL in HeLa cell extract based on a 1.2 mg/mL extract load and 11.0 ng/mL in A431 cell extract based on a 1.5 mg/mL extract load.



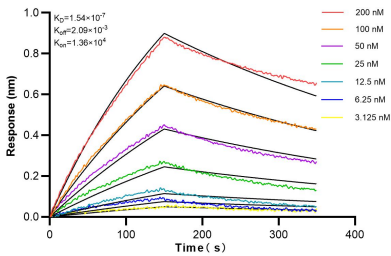
Immunohistochemical analysis of paraffin-embedded human stomach cancer tissue slide using 83250-2-RR (Ribophorin I antibody) at dilution of 1:500 (under 20x lens). Heat mediated antigen retrieval with Tris-EDTA buffer(pH9). This data was developed using the same antibody clone with 83250-2-PBS in a different storage buffer formulation.



Cytometric bead array standard curve of MP00231-2, RPN1 Recombinant Matched Antibody Pair, PBS Only. Capture antibody: 83250-2-PBS. Detection antibody: 83250-1-PBS. Standard: Ag3576. Range: 2.5-80 ng/mL.



Biolayer interferometry (BLI) kinetic assay of 83250-2-PBS against Human Ribophorin I was performed. The affinity constant is 1.69 nM.



Biolayer interferometry (BLI) kinetic assays of 83250-2-RR against Human RPN1 were performed. The affinity constant is 0.154 uM.