

For Research Use Only

Ribophorin I Recombinant antibody, PBS Only (Capture/Detector)

Catalog Number: 83250-1-PBS



Basic Information

Catalog Number:

83250-1-PBS

Size:

1mg/ml

Source:

Rabbit

Isotype:

IgG

Immunogen Catalog Number:

AG3576

GenBank Accession Number:

BC010839

GeneID (NCBI):

6184

UNIPROT ID:

P04843

Full Name:

ribophorin I

Calculated MW:

69 kDa

Purification Method:

Protein A purification

CloneNo.:

240044B1

Applications

Tested Applications:

Cytometric bead array, Sandwich ELISA, Indirect ELISA,
Sample test

Species Specificity:

human

Background Information

Storage

Storage:

Store at -80°C.

The product is shipped with ice packs. Upon receipt, store it immediately at -80°C

Storage Buffer:

PBS Only

For technical support and original validation data for this product please contact:

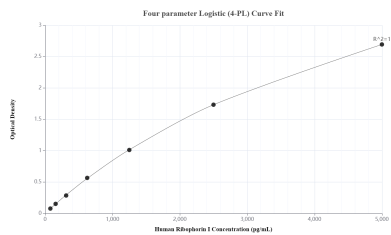
T: 4006900926

E: Proteintech-CN@ptglab.com

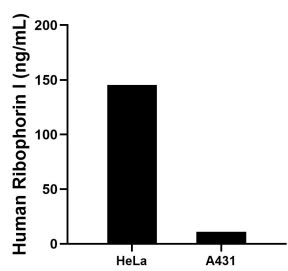
W: ptgcn.com

This product is exclusively available under Proteintech Group brand and is not available to purchase from any other manufacturer.

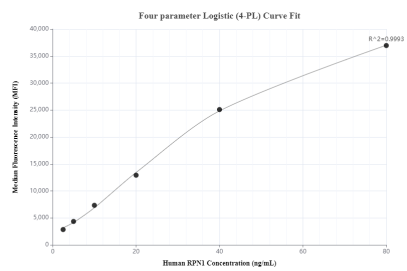
Selected Validation Data



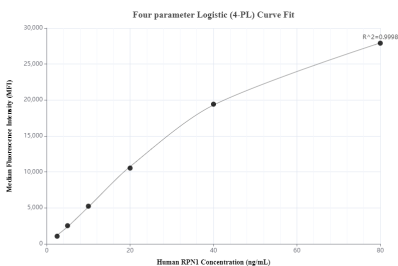
Sandwich ELISA standard curve of MP00231-3, Human Ribophorin I Recombinant Matched Antibody Pair - PBS only. 83250-1-PBS was coated to a plate as the capture antibody and incubated with serial dilutions of standard Ag3576. 83250-2-PBS was HRP conjugated as the detection antibody. Range: 78.1-5000 pg/mL



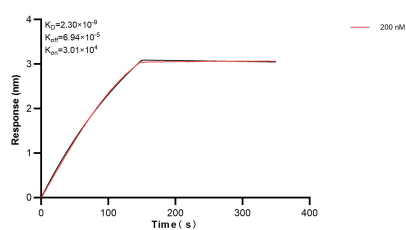
The mean Ribophorin I concentration was determined to be 145.4 ng/mL in HeLa cell extract based on a 1.2 mg/mL extract load and 11.0 ng/mL in A431 cell extract based on a 1.5 mg/mL extract load.



Cytometric bead array standard curve of MP00231-1, RPN1 Recombinant Matched Antibody Pair, PBS Only. Capture antibody: 83250-1-PBS. Detection antibody: 83250-3-PBS. Standard: Ag3576. Range: 2.5-80 ng/mL



Cytometric bead array standard curve of MP00231-2, RPN1 Recombinant Matched Antibody Pair, PBS Only. Capture antibody: 83250-2-PBS. Detection antibody: 83250-1-PBS. Standard: Ag3576. Range: 2.5-80 ng/mL



Biolayer interferometry (BLI) kinetic assay of 83250-1-PBS against Human Ribophorin I was performed. The affinity constant is 2.30 nM.