

For Research Use Only

CBX1 Recombinant antibody

Catalog Number: 83248-4-RR

Featured Product



Basic Information

Catalog Number:

83248-4-RR

Concentration:

1000 ug/ml

Source:

Rabbit

Isotype:

IgG

Immunogen Catalog Number:

AG34901

GenBank Accession Number:

BC002609

GeneID (NCBI):

10951

UNIPROT ID:

P83916

Full Name:

chromobox homolog 1 (HP1 beta homolog Drosophila)

Calculated MW:

27 kDa

Observed MW:

27 kDa

Purification Method:

Protein A purification

CloneNo.:

240075H6

Recommended Dilutions:

WB: 1:5000-1:50000

IF/ICC: 1:150-1:600

FC (Intra): 0.25 ug per 10⁶ cells in a 100 µl suspension

Applications

Tested Applications:

WB, IF/ICC, FC (Intra), ELISA

Species Specificity:

human, mouse

Positive Controls:

WB : MCF-7 cells, mouse spleen tissue, mouse brain tissue, mouse kidney tissue, rat brain tissue, human kidney tissue

IF/ICC : HeLa cells,

FC (Intra) : HeLa cells,

Background Information

One function of heterochromatin is the epigenetic silencing by sequestration of genes into transcriptionally repressed nuclear neighborhoods. Heterochromatin protein 1 (HP1) is a major component of heterochromatin and is a candidate for establishing and mediating gene silencing. This protein is expressed in all adult and embryonic tissues, as a homodimer.

Storage

Storage:

Store at -20°C. Stable for one year after shipment.

Storage Buffer:

PBS with 0.02% sodium azide and 50% glycerol, pH7.3

Aliquoting is unnecessary for -20°C storage

For technical support and original validation data for this product please contact:

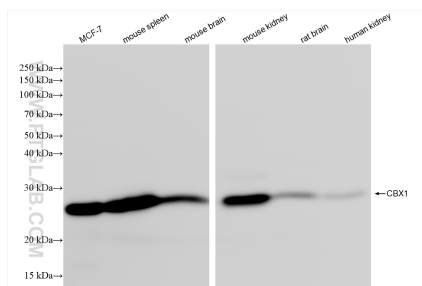
T: 4006900926

E: Proteintech-CN@ptglab.com

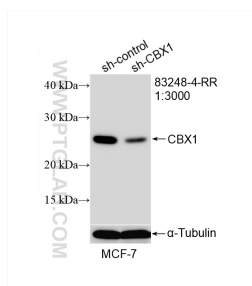
W: ptgcn.com

This product is exclusively available under Proteintech Group brand and is not available to purchase from any other manufacturer.

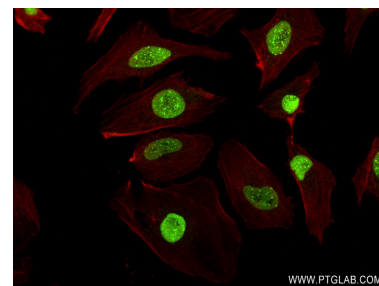
Selected Validation Data



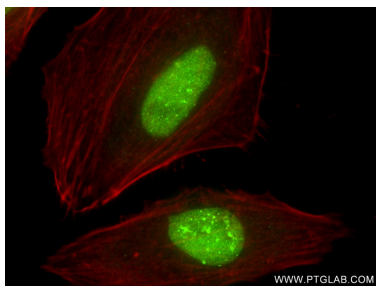
Various lysates were subjected to SDS PAGE followed by western blot with 83248-4-RR (CBX1 antibody) at dilution of 1:10000 incubated at room temperature for 1.5 hours.



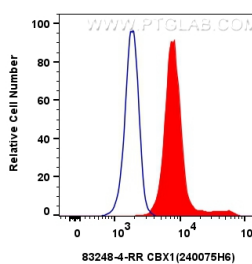
WB result of CBX1 antibody (83248-4-RR; 1:3000; incubated at room temperature for 1.5 hours) with sh-Control and sh-CBX1 transfected MCF-7 cells.



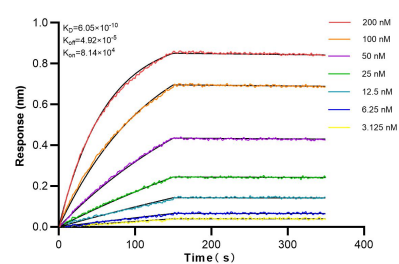
Immunofluorescent analysis of (4% PFA) fixed HeLa cells using CBX1 antibody (83248-4-RR, Clone: 240075H6) at dilution of 1:300 and CoraLite®488-Conjugated AffiniPure Goat Anti-Rabbit IgG(H+L) (SA00013-2), CL594-Phalloidin (red).



Immunofluorescent analysis of (4% PFA) fixed HeLa cells using CBX1 antibody (83248-4-RR, Clone: 240075H6) at dilution of 1:300 and CoraLite®488-Conjugated AffiniPure Goat Anti-Rabbit IgG(H+L) (SA00013-2), CL594-Phalloidin (red).



1x10⁶ HeLa cells were intracellularly stained with 0.25 μ g Cbx1 Recombinant Antibody (83248-4-RR, Clone:240075H6) and CoraLite®488-Conjugated AffiniPure Goat Anti-Rabbit IgG(H+L) (SA00013-2) (red), or 0.25 μ g Isotype Control (blue). Cells were fixed and permeabilized with Transcription Factor Staining Buffer Kit (PF00011).



Biolayer interferometry (BLI) kinetic assays of 83248-4-RR against Human CBX1 were performed. The affinity constant is 0.605 nM.