

CBX1 Recombinant antibody

Catalog Number: 83248-3-RR

Basic Information

Catalog Number:

83248-3-RR

Size:

500 µg/ml

Source:

Rabbit

Isotype:

IgG

Immunogen Catalog Number:

AG34901

GenBank Accession Number:

BC002609

GeneID (NCBI):

10951

UNIPROT ID:

P83916

Full Name:

chromobox homolog 1 (HP1 beta homolog Drosophila)

Calculated MW:

27 kDa

Observed MW:

27 kDa

Purification Method:

Protein A purification

CloneNo.:

240075E1

Recommended Dilutions:

WB 1:2000-1:10000

IF/ICC 1:125-1:500

Applications

Tested Applications:

WB, IF/ICC, FC (Intra), ELISA

Species Specificity:

human, mouse, rat

Positive Controls:

WB : CHO cells, PC-12 cells, MCF-7 cells, NIH/3T3 cells, mouse spleen tissue, mouse brain tissue

IF/ICC : HeLa cells, A431 cells

Background Information

One function of heterochromatin is the epigenetic silencing by sequestration of genes into transcriptionally repressed nuclear neighborhoods. Heterochromatin protein 1 (HP1) is a major component of heterochromatin and is a candidate for establishing and mediating gene silencing. This protein is expressed in all adult and embryonic tissues, as a homodimer.

Storage

Storage:

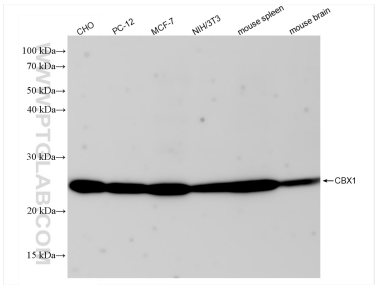
Store at -20°C. Stable for one year after shipment.

Storage Buffer:

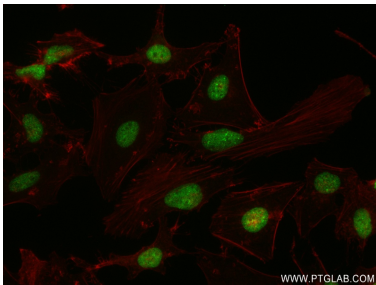
PBS with 0.02% sodium azide and 50% glycerol pH 7.3.

Aliquoting is unnecessary for -20°C storage

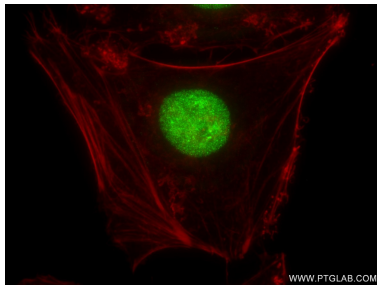
Selected Validation Data



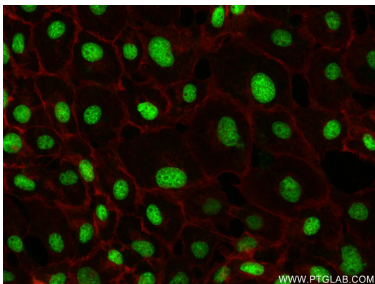
Various lysates were subjected to SDS PAGE followed by western blot with 83248-3-RR (CBX1 antibody) at dilution of 1:5000 incubated at room temperature for 1.5 hours.



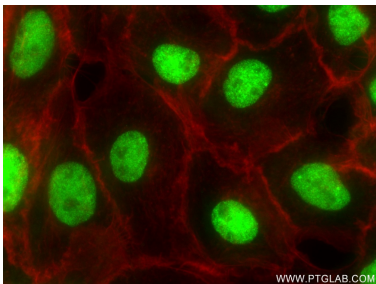
Immunofluorescent analysis of (4% PFA) fixed HeLa cells using CBX1 antibody (83248-3-RR, Clone: 240075E1) at dilution of 1:250 and CoraLite®488-Conjugated AffiniPure Goat Anti-Mouse IgG(H+L) (SA00013-1), CL594-Phalloidin (red).



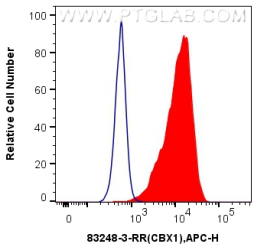
Immunofluorescent analysis of (4% PFA) fixed HeLa cells using CBX1 antibody (83248-3-RR, Clone: 240075E1) at dilution of 1:250 and CoraLite®488-Conjugated AffiniPure Goat Anti-Mouse IgG(H+L) (SA00013-1), CL594-Phalloidin (red).



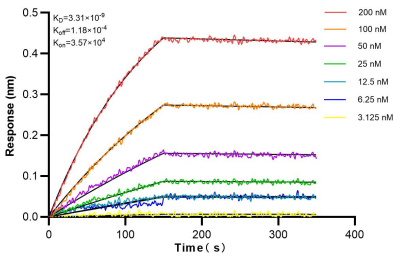
Immunofluorescent analysis of (4% PFA) fixed A431 cells using CBX1 antibody (83248-3-RR, Clone: 240075E1) at dilution of 1:250 and CoraLite®488-Conjugated AffiniPure Goat Anti-Mouse IgG(H+L) (SA00013-1), CL594-Phalloidin (red).



Immunofluorescent analysis of (4% PFA) fixed A431 cells using CBX1 antibody (83248-3-RR, Clone: 240075E1) at dilution of 1:250 and CoraLite®488-Conjugated AffiniPure Goat Anti-Mouse IgG(H+L) (SA00013-1), CL594-Phalloidin (red).



1x10⁶ HeLa cells were intracellularly stained with 0.25 ug CBX1 Recombinant antibody (83248-3-RR, Clone:240075E1) and APC-Conjugated AffiniPure Goat Anti-Rabbit IgG(H+L)(red), or 0.25 ug Isotype Control (blue). Cells were fixed and permeabilized with Transcription Factor Staining Buffer Kit (PF00011).



Biolayer interferometry (BLI) kinetic assays of 83248-3-RR against Human CBX1 were performed. The affinity constant is 3.31 nM.