

For Research Use Only

CBX1 Recombinant antibody, PBS Only (Detector)

Catalog Number: 83248-2-PBS



Basic Information

Catalog Number:

83248-2-PBS

Size:

1mg/ml

Source:

Rabbit

Isotype:

IgG

Immunogen Catalog Number:

AG34901

GenBank Accession Number:

BC002609

GeneID (NCBI):

10951

UNIPROT ID:

P83916

Full Name:

chromobox homolog 1 (HP1 beta homolog Drosophila)

Calculated MW:

27 kDa

Purification Method:

Protein A purification

CloneNo.:

240075H1

Applications

Tested Applications:

Cytometric bead array, Sandwich ELISA, Indirect ELISA, Sample test

Species Specificity:

human

Background Information

Storage

Storage:

Store at -80°C.

The product is shipped with ice packs. Upon receipt, store it immediately at -80°C

Storage Buffer:

PBS Only

For technical support and original validation data for this product please contact:

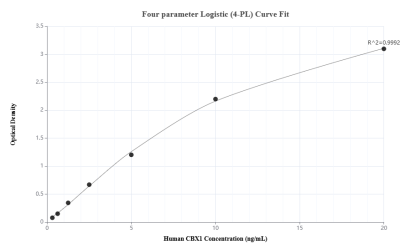
T: 4006900926

E: Proteintech-CN@ptglab.com

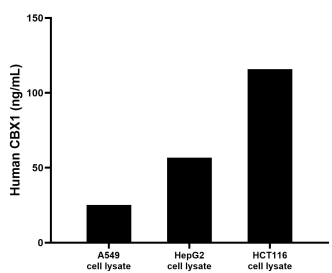
W: ptgcn.com

This product is exclusively available under Proteintech Group brand and is not available to purchase from any other manufacturer.

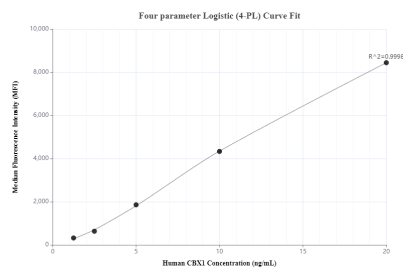
Selected Validation Data



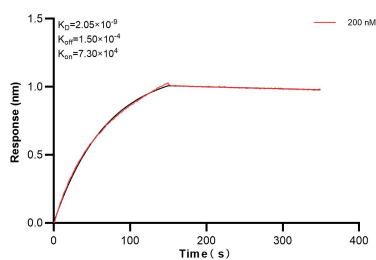
Sandwich ELISA standard curve of MP00224-1, Human CBX1 Recombinant Matched Antibody Pair - PBS only. 83248-1-PBS was coated to a plate as the capture antibody and incubated with serial dilutions of standard Ag34901. 83248-2-PBS was HRP conjugated as the detection antibody. Range: 0.313-20 ng/mL



A549, HepG2 and HCT116 cell lysates were measured. The human CBX1 concentration of detected samples was determined to be 25.23 ng/mL (based on a 1.0 mg/mL extract load) in A549 cell lysate, 56.68 ng/mL (based on a 1.2 mg/mL extract load) in HepG2 cell lysate and 115.85 ng/mL (based on a 2.0 mg/mL extract load) in HCT116 cell lysate.



Cytometric bead array standard curve of MP00224-1, CBX1 Recombinant Matched Antibody Pair, PBS Only. Capture antibody: 83248-1-PBS. Detection antibody: 83248-2-PBS. Standard: Ag34901. Range: 1.25-20 ng/mL



Biolayer interferometry (BLI) kinetic assay of 83248-2-PBS against Human CBX1 was performed. The affinity constant is 2.05 nM.