

For Research Use Only

APCDD1 Recombinant antibody, PBS Only (Capture/Detector)

Catalog Number: 83246-1-PBS



Basic Information

Catalog Number:

83246-1-PBS

Size:

1mg/ml

Source:

Rabbit

Isotype:

IgG

Immunogen Catalog Number:

AG10303

GenBank Accession Number:

BC053324

GeneID (NCBI):

147495

UNIPROT ID:

Q8J025

Full Name:

adenomatosis polyposis coli down-regulated 1

Calculated MW:

514 aa, 59 kDa

Purification Method:

Protein A purification

CloneNo.:

240085A5

Applications

Tested Applications:

Cytometric bead array, Sandwich ELISA, Indirect ELISA, Sample test

Species Specificity:

human

Background Information

Storage

Storage:

Store at -80°C.

The product is shipped with ice packs. Upon receipt, store it immediately at -80°C

Storage Buffer:

PBS Only

For technical support and original validation data for this product please contact:

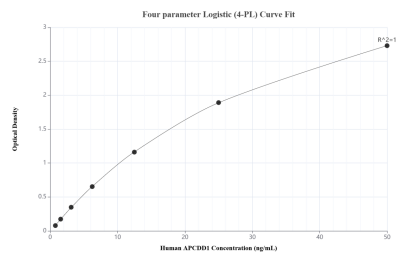
T: 4006900926

E: Proteintech-CN@ptglab.com

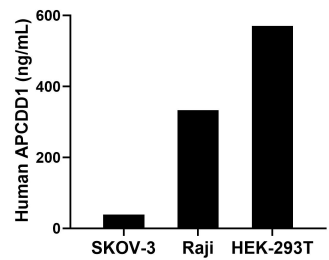
W: ptgcn.com

This product is exclusively available under Proteintech Group brand and is not available to purchase from any other manufacturer.

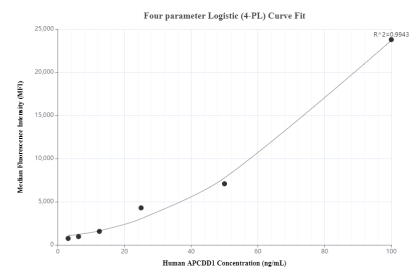
Selected Validation Data



Sandwich ELISA standard curve of MP00199-4, Human APCDD1 Recombinant Matched Antibody Pair - PBS only. 83246-1-PBS was coated to a plate as the capture antibody and incubated with serial dilutions of standard Ag10303. 83246-2-PBS was HRP conjugated as the detection antibody. Range: 0.781-50 ng/mL



The mean APCDD1 concentration was determined to be 39.03 ng/mL in SKOV-3 cell extract based on a 4.20 mg/mL extract load, 333.27 ng/mL in Raji cell extract based on a 3.00 mg/mL extract load and 570.52 ng/mL in HEK-293T cell extract based on a 2.60 mg/mL extract load.



Cytometric bead array standard curve of MP00199-2, APCDD1 Recombinant Matched Antibody Pair, PBS Only. Capture antibody: 83246-2-PBS. Detection antibody: 83246-1-PBS. Standard: Ag10303. Range: 3.13-100 ng/mL