

For Research Use Only

Mouse Cxcl15 Recombinant antibody, PBS Only (Detector)

Catalog Number: 83245-1-PBS



Basic Information

Catalog Number:

83245-1-PBS

Size:

1mg/ml

Source:

Rabbit

Isotype:

IgG

Immunogen Catalog Number:

AG33964

GenBank Accession Number:

BC061138

GeneID (NCBI):

20309

UNIPROT ID:

Q9WVL7

Full Name:

chemokine (C-X-C motif) ligand 15

Calculated MW:

19 kDa

Purification Method:

Protein A purification

CloneNo.:

240163A6

Applications

Tested Applications:

WB, Cytometric bead array, Indirect ELISA

Species Specificity:

mouse

Background Information

Storage

Storage:

Store at -80°C.

The product is shipped with ice packs. Upon receipt, store it immediately at -80°C

Storage Buffer:

PBS Only

For technical support and original validation data for this product please contact:

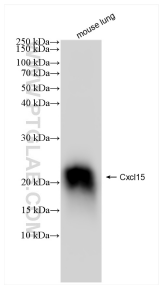
T: 4006900926

E: Proteintech-CN@ptglab.com

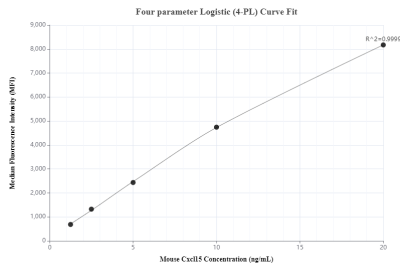
W: ptgcn.com

This product is exclusively available under Proteintech Group brand and is not available to purchase from any other manufacturer.

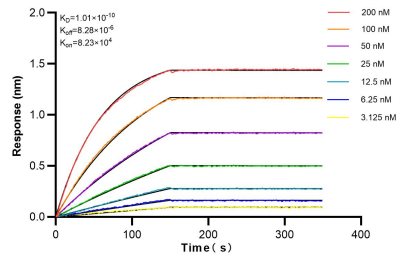
Selected Validation Data



mouse lung tissue were subjected to SDS PAGE followed by western blot with 83245-1-RR (Cxcl15 antibody) at dilution of 1:10000 incubated at room temperature for 1.5 hours. This data was developed using the same antibody clone with 83245-1-PBS in a different storage buffer formulation.



Cytometric bead array standard curve of MP00193-2, Mouse Cxcl15 Recombinant Matched Antibody Pair, PBS Only. Capture antibody: 83245-3-PBS. Detection antibody: 83245-1-PBS. Standard: Ag33964. Range: 1.25-20 ng/mL.



Biolayer interferometry (BLI) kinetic assays of 83245-1-RR against Mouse Cxcl15 were performed. The affinity constant is 0.101 nM.