

For Research Use Only

SLC2A7 Recombinant antibody, PBS Only (Detector)



Catalog Number: 83226-1-PBS

Basic Information

Catalog Number: 83226-1-PBS	GenBank Accession Number: NM_207420	Purification Method: Protein A purification
Size: 1mg/ml	GeneID (NCBI): 155184	CloneNo.: 240095A5
Source: Rabbit	UNIPROT ID: Q6PXP3	
Isotype: IgG	Full Name: solute carrier family 2 (facilitated glucose transporter), member 7	
Immunogen Catalog Number: AG34515	Calculated MW: 512 aa, 56 kDa	

Applications

Tested Applications:
Indirect ELISA, Cytometric bead array

Species Specificity:
Human

Background Information

Storage

Storage:
Store at -80°C.
The product is shipped with ice packs. Upon receipt, store it immediately at -80°C

Storage Buffer:
PBS Only

For technical support and original validation data for this product please contact:

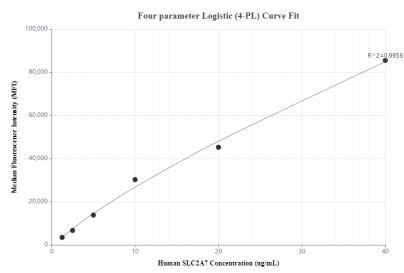
T: 4006900926

E: Proteintech-CN@ptglab.com

W: ptgcn.com

This product is exclusively available under Proteintech Group brand and is not available to purchase from any other manufacturer.

Selected Validation Data



Cytometric bead array standard curve of MP00174-1, SLC2A7 Recombinant Matched Antibody Pair, PBS Only. Capture antibody: 83226-2-PBS. Detection antibody: 83226-1-PBS. Standard: Ag34515. Range: 1.25-40 ng/mL.