

For Research Use Only

# Rat KIM-1/HAVCR1 Recombinant antibody, PBS Only (Capture)

Catalog Number: 83221-2-PBS



## Basic Information

Catalog Number:

83221-2-PBS

Size:

1 mg/ml

Source:

Rabbit

Isotype:

IgG

GenBank Accession Number:

NM\_173149.2

GeneID (NCBI):

286934

UNIPROT ID:

O54947

Full Name:

hepatitis A virus cellular receptor 1

Calculated MW:

34 kDa

Observed MW:

72 kDa

Purification Method:

Protein A purification

CloneNo.:

230528C5

## Applications

Tested Applications:

WB, Cytometric bead array, Indirect ELISA

Species Specificity:

mouse, rat

## Background Information

Kidney injury molecule 1 (KIM-1), also known as Hepatitis A virus cellular receptor 1 (HAVCR1), CD365, or T-cell immunoglobulin and mucin domain 1 (TIM-1), is a class I integral membrane glycoprotein, with an ectodomain containing Ig-like domain and a mucin domain. KIM-1 acts as a membrane receptor for hepatitis A virus (HAV) (PMID: 9658108; 8861957). KIM-1 provides a costimulatory signal for T cell activation and inhibits the development of peripheral tolerance (PMID: 16284246; 15793575). KIM-1 may be involved in the regulation of asthma and allergic diseases (PMID: 14534576). It has been reported that KIM-1 is shed into urine after acute kidney damage and is a marker of renal tubular injury (PMID: 14600030).

## Storage

Storage:

Store at -80°C.

The product is shipped with ice packs. Upon receipt, store it immediately at -80°C

Storage Buffer:

PBS Only

For technical support and original validation data for this product please contact:

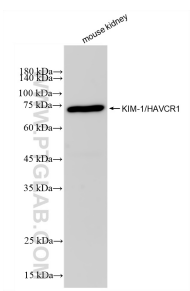
T: 4006900926

E: [Proteintech-CN@ptglab.com](mailto:Proteintech-CN@ptglab.com)

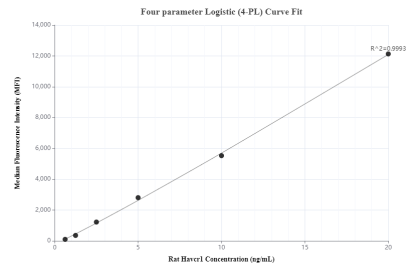
W: [ptgcn.com](http://ptgcn.com)

This product is exclusively available under Proteintech Group brand and is not available to purchase from any other manufacturer.

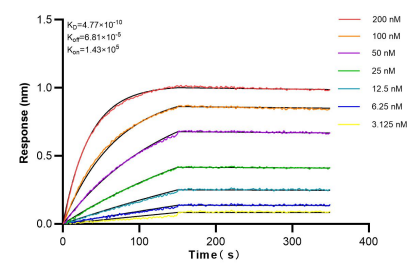
## Selected Validation Data



Mouse kidney tissue was subjected to SDS PAGE followed by western blot with 83221-2-RR (HAVCR1 antibody) at dilution of 1:10000 incubated at room temperature for 1.5 hours. This data was developed using the same antibody clone with 83221-2-PBS in a different storage buffer formulation.



Cytometric bead array standard curve of MP00213-2, Rat KIM-1/HAVCR1 Recombinant Matched Antibody Pair, PBS Only. Capture antibody: 83221-2-PBS. Detection antibody: 83221-4-PBS. Standard: Eg0597. Range: 0.625-20 ng/mL.



Biolayer interferometry (BLI) kinetic assays of 83221-2-RR against Rat HAVCR1 were performed. The affinity constant is 0.477 nM.