

For Research Use Only

NDUFB8 Recombinant antibody, PBS Only (Capture/Detector)

Catalog Number: 83216-1-PBS



Basic Information

Catalog Number:

83216-1-PBS

Size:

1mg/ml

Source:

Rabbit

Isotype:

IgG

Immunogen Catalog Number:

AG6495

GenBank Accession Number:

BC000466

GeneID (NCBI):

4714

UNIPROT ID:

O95169

Full Name:

NADH dehydrogenase (ubiquinone) 1
beta subcomplex, 8, 19kDa

Calculated MW:

22 kDa

Purification Method:

Protein A purification

CloneNo.:

230510E10

Applications

Tested Applications:

Cytometric bead array, Sandwich ELISA, Indirect ELISA,
Sample test

Species Specificity:

human

Background Information

Storage

Storage:

Store at -80°C.

The product is shipped with ice packs. Upon receipt, store it immediately at -80°C

Storage Buffer:

PBS Only

For technical support and original validation data for this product please contact:

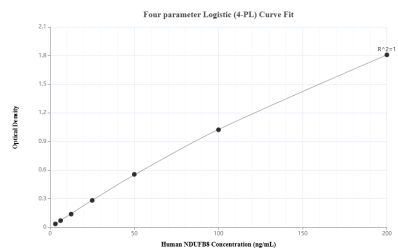
T: 4006900926

E: Proteintech-CN@ptglab.com

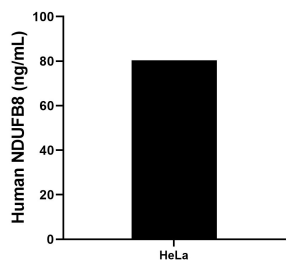
W: ptgcn.com

This product is exclusively available under Proteintech Group brand and is not available to purchase from any other manufacturer.

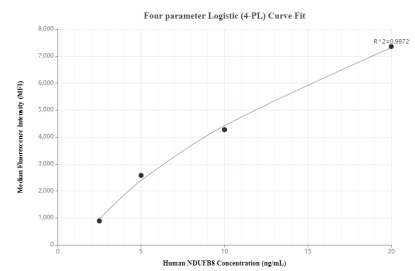
Selected Validation Data



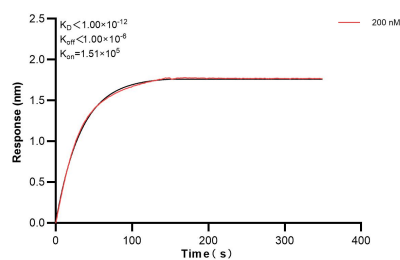
Sandwich ELISA standard curve of MP00204-2, Human NDUFB8 Recombinant Matched Antibody Pair - PBS only. 83216-6-PBS was coated to a plate as the capture antibody and incubated with serial dilutions of standard Ag6495. 83216-1-PBS was HRP conjugated as the detection antibody. Range: 3.13-200 ng/mL.



The mean NDUFB8 concentration was determined to be 80.40 ng/mL in HeLa cell extract based on a 1.5 mg/mL extract load.



Cytometric bead array standard curve of MP00204-1, NDUFB8 Recombinant Matched Antibody Pair, PBS Only. Capture antibody: 83216-1-PBS. Detection antibody: 83216-2-PBS. Standard: Ag6495. Range: 2.5-20 ng/mL.



Biolayer interferometry (BLI) kinetic assay of 83216-1-PBS against Human NDUFB8 was performed. The affinity constant is below 1 pM.