

NCBP1/CBP80 Recombinant antibody

Catalog Number: 83212-4-RR

Basic Information

Catalog Number:	83212-4-RR	GenBank Accession Number:	BC001450	Purification Method:	Protein A purification
Size:	1000 ug/ml	GeneID (NCBI):	4686	CloneNo.:	240012G8
Source:	Rabbit	UNIPROT ID:	Q09161	Recommended Dilutions:	WB 1:5000-1:50000 IHC 1:200-1:800 IF/ICC 1:200-1:800
Isotype:	IgG	Full Name:	nuclear cap binding protein subunit 1, 80kDa		
Immunogen Catalog Number:	AG0496	Calculated MW:	92 kDa		
		Observed MW:	80 kDa		

Applications

Tested Applications:	WB, IHC, IF/ICC, FC (Intra), ELISA	Positive Controls:	
Species Specificity:	human, rat	WB :	Jurkat cells, HeLa cells, HepG2 cells, A431 cells, NCI-H1299 cells, PC-12 cells, HEK-293 cells
Note-IHC: suggested antigen retrieval with TE buffer pH 9.0; (*) Alternatively, antigen retrieval may be performed with citrate buffer pH 6.0		IHC :	human ovary cancer tissue,
		IF/ICC :	HepG2 cells,

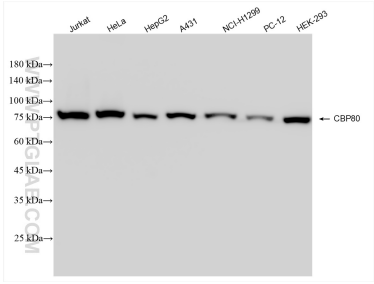
Background Information

Nuclear cap binding protein subunit 1, 80kDa (NCBP1, synonyms: NCBP, CBP80) is a subunit of a cap-binding protein complex (CBC) that consists of a CBP20 subunit, which binds the cap, and a NCBP1 subunit, which ensures high-affinity cap binding. The CBC complex may play a role in pre-mRNA recognition and splicing.

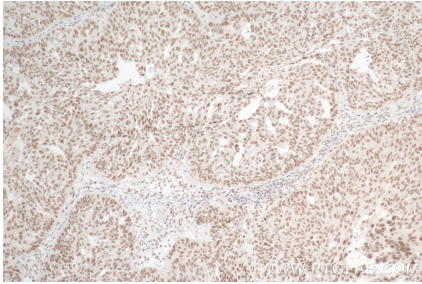
Storage

Storage:
Store at -20°C. Stable for one year after shipment.
Storage Buffer:
PBS with 0.02% sodium azide and 50% glycerol pH 7.3.
Aliquoting is unnecessary for -20°C storage

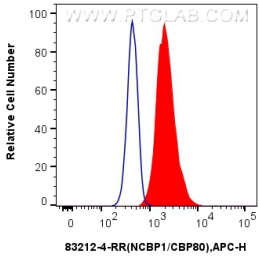
Selected Validation Data



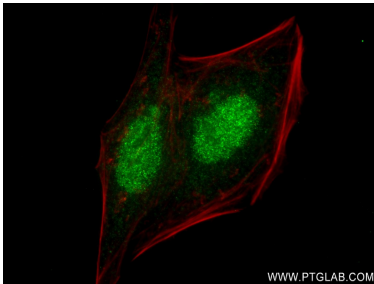
Various lysates were subjected to SDS PAGE followed by western blot with 83212-4-RR (CBP80 antibody) at dilution of 1:10000 incubated at room temperature for 1.5 hours.



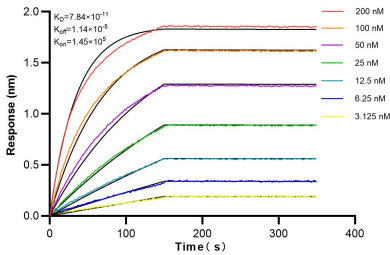
Immunohistochemical analysis of paraffin-embedded human ovary cancer tissue slide using 83212-4-RR (NCBP1/CBP80 antibody) at dilution of 1:400 (under 10x lens). Heat mediated antigen retrieval with Tris-EDTA buffer (pH 9.0).



1x10⁶ HepG2 cells were intracellularly stained with 0.25 ug CBP80 Recombinant antibody (83212-4-RR, Clone:240012G8) and APC-Conjugated AffiniPure Goat Anti-Rabbit IgG(H+L)(red), or 0.25 ug Isotype Control (blue). Cells were fixed with 4% PFA and permeabilized with Flow Cytometry Perm Buffer (PF00011-C).



Immunofluorescent analysis of (4% PFA) fixed HepG2 cells using CBP80 antibody (83212-4-RR, Clone: 240012G8) at dilution of 1:400 and CoraLite®488-Conjugated AffiniPure Goat Anti-Rabbit IgG(H+L) (SA00013-2), CL594-Phalloidin (red).



Biolayer interferometry (BLI) kinetic assays of 83212-4-RR against Human CBP80 were performed. The affinity constant is 0.131 nM.