

For Research Use Only

LAMA3 Recombinant antibody, PBS Only (Detector)

Catalog Number: 83210-2-PBS



Basic Information

Catalog Number:

83210-2-PBS

Concentration:

1mg/ml

Source:

Rabbit

Isotype:

IgG

GenBank Accession Number:

NM_000227

GeneID (NCBI):

3909

UNIPROT ID:

Q16787

Full Name:

laminin, alpha 3

Calculated MW:

367 kDa

Observed MW:

260 kDa

Purification Method:

Protein A purification

CloneNo.:

230443C1

Applications

Tested Applications:

WB, IHC, Cytometric bead array, Sandwich ELISA, Indirect ELISA, Sample test

Species Specificity:

human

Background Information

Laminin subunit alpha 3 (LAMA3) expression is mediated by an epithelial enhancer via a synergistic effect of AP-1 binding sites. LAMA3 has been implicated in the invasion and progression of tumor cells and encodes for the $\alpha 3$ chain of laminin-5 ($\alpha 3, \beta 3, \gamma 2, 332$). Its dysfunction manifests as a blistering skin disease similar to junctional epidermolysis bullosa in humans. (PMID: 31557618)

Storage

Storage:

Store at -80°C.

The product is shipped with ice packs. Upon receipt, store it immediately at -80°C

Storage Buffer:

PBS Only

For technical support and original validation data for this product please contact:

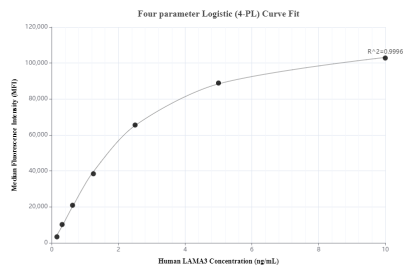
T: 4006900926

E: Proteintech-CN@ptglab.com

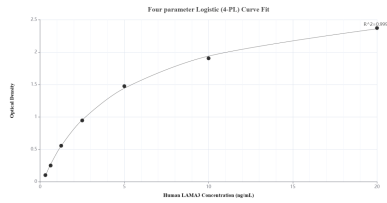
W: ptgcn.com

This product is exclusively available under Proteintech Group brand and is not available to purchase from any other manufacturer.

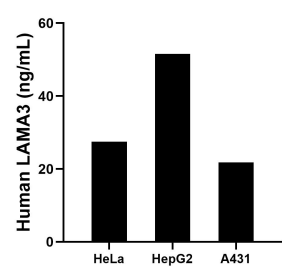
Selected Validation Data



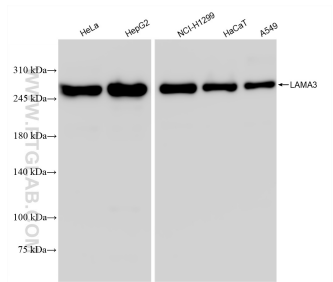
Cytometric bead array standard curve of MP00186-2, LAMA3 Recombinant Matched Antibody Pair, PBS Only. Capture antibody: 83210-1-PBS. Detection antibody: 83210-2-PBS. Standard: SY01122. Range: 0.156-10 ng/mL



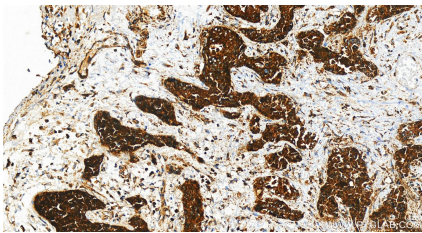
Sandwich ELISA standard curve of MP00186-2, Human LAMA3 Recombinant Matched Antibody Pair - PBS only. 83210-1-PBS was coated to a plate as the capture antibody and incubated with serial dilutions of standard SY01122. 83210-2-PBS was HRP conjugated as the detection antibody. Range: 0.131-20 ng/mL



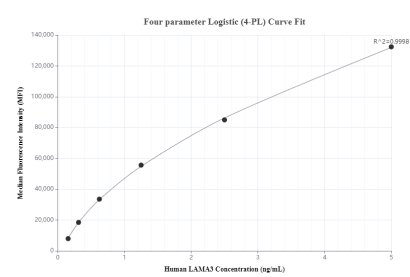
The mean LAMA3 concentration was determined to be 27.50 ng/mL in HeLa cell extract based on a 3.60 mg/mL extract load, 51.60 ng/mL in HepG2 cell extract based on a 5.00 mg/mL extract load and 21.80 ng/mL in A431 cell extract based on a 2.60 mg/mL extract load.



Various lysates were subjected to SDS PAGE followed by western blot with 83210-2-RR (LAMA3 antibody) at dilution of 1:10000 incubated at room temperature for 1.5 hours. This data was developed using the same antibody clone with 83210-2-PBS in a different storage buffer formulation.



Immunohistochemical analysis of paraffin-embedded human intrahepatic cholangiocarcinoma tissue slide using 83210-2-RR (LAMA3 antibody) at dilution of 1:1000 (under 20x lens). Heat mediated antigen retrieval with Tris-EDTA buffer (pH 9.0). This data was developed using the same antibody clone with 83210-2-PBS in a different storage buffer formulation.



Cytometric bead array standard curve of MP00186-3, LAMA3 Recombinant Matched Antibody Pair, PBS Only. Capture antibody: 83210-4-PBS. Detection antibody: 83210-2-PBS. Standard: SY01122. Range: 0.156-5 ng/mL