

For Research Use Only

GRAF Recombinant antibody, PBS Only (Detector)

Catalog Number: 83206-1-PBS



Basic Information

Catalog Number:	83206-1-PBS	GenBank Accession Number:	BC068555	Purification Method:	Protein A purification
Size:	1 mg/ml	GeneID (NCBI):	23092	CloneNo.:	240086A11
Source:	Rabbit	UNIPROT ID:	Q9UNA1		
Isotype:	IgG	Full Name:	Rho GTPase activating protein 26		
Immunogen Catalog Number:	AG12008	Calculated MW:	759 aa, 86 kDa		
		Observed MW:	92-100 kDa		

Applications

Tested Applications:
WB, Cytometric bead array, Indirect ELISA

Species Specificity:
human

Background Information

GTPase Regulator Associated with Focal Adhesion Kinase (GRAF), also known as Rho GTPase activating protein 26 (ARHGAP26), is a GTPase-activating protein and inhibits the activity of Rho GTPases by promoting the hydrolytic ability of Rho GTPases. GRAF enhances the hydrolysis of GTPases and converts GTPases from an active form to an inactive form, thereby inhibiting signaling transduction. Deletion and mutation of ARHGAP26 can lead to promyelocytic leukemia, suggesting tumor suppressive activity of ARHGAP26. ARHGAP26 was downregulated in glioblastoma and associated with cell proliferation and migration (PMID: 10908648, PMID: 17611651, PMID: 31004081).

Storage

Storage:
Store at -80°C.
The product is shipped with ice packs. Upon receipt, store it immediately at -80°C

Storage Buffer:
PBS Only

For technical support and original validation data for this product please contact:

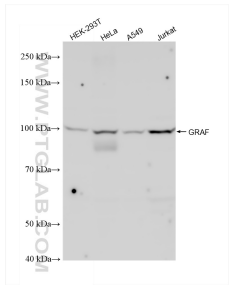
T: 4006900926

E: Proteintech-CN@ptglab.com

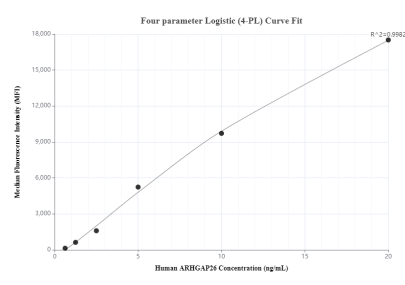
W: ptgcn.com

This product is exclusively available under Proteintech Group brand and is not available to purchase from any other manufacturer.

Selected Validation Data



Various lysates were subjected to SDS PAGE followed by western blot with 83206-1-RR (GRAF antibody) at dilution of 1:1000 incubated at room temperature for 1.5 hours. This data was developed using the same antibody clone with 83206-1-PBS in a different storage buffer formulation.



Cytometric bead array standard curve of MP00157-1, ARHGAP26 Recombinant Matched Antibody Pair, PBS Only. Capture antibody: 83206-2-PBS. Detection antibody: 83206-1-PBS. Standard: Ag12008. Range: 0.625-20 ng/mL.