

For Research Use Only

# KLF5 Recombinant antibody, PBS Only (Capture/Detector)

Catalog Number: 83205-1-PBS



## Basic Information

Catalog Number:	83205-1-PBS	GenBank Accession Number:	BC042131	Purification Method:	Protein A purification
Size:	1mg/ml	GeneID (NCBI):	688	CloneNo.:	230509C4
Source:	Rabbit	UNIPROT ID:	Q13887		
Isotype:	IgG	Full Name:	Kruppel-like factor 5 (intestinal)		
Immunogen Catalog Number:	AG15267	Calculated MW:	457 aa, 51 kDa		

## Applications

**Tested Applications:**  
Cytometric bead array, Sandwich ELISA, Indirect ELISA,  
Sample test

**Species Specificity:**  
human

## Background Information

### Storage

**Storage:**  
Store at -80°C.  
**The product is shipped with ice packs. Upon receipt, store it immediately at -80°C**

**Storage Buffer:**  
PBS Only

For technical support and original validation data for this product please contact:

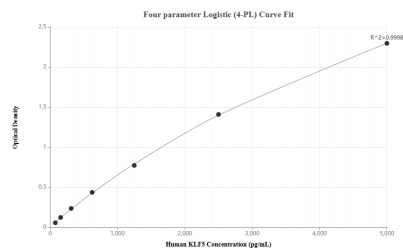
T: 4006900926

E: [Proteintech-CN@ptglab.com](mailto:Proteintech-CN@ptglab.com)

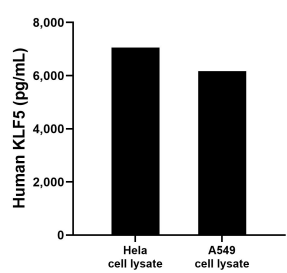
W: [ptgcn.com](http://ptgcn.com)

**This product is exclusively available under Proteintech Group brand and is not available to purchase from any other manufacturer.**

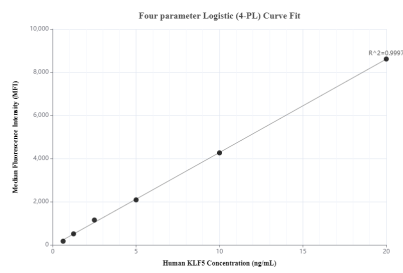
## Selected Validation Data



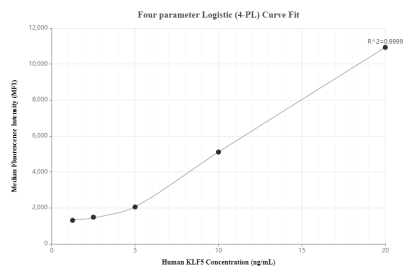
Sandwich ELISA standard curve of MP00155-2, Human KLF5 Recombinant Matched Antibody Pair - PBS only. 83205-1-PBS was coated to a plate as the capture antibody and incubated with serial dilutions of standard Ag15267. 83205-2-PBS was HRP conjugated as the detection antibody. Range: 78.1-5000 pg/mL



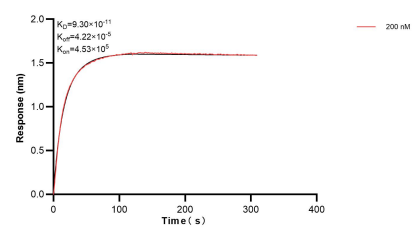
HeLa and A549 cell lysates were measured. The human KLF5 concentration of detected samples was determined to be 7,055.7 pg/mL (based on a 3.2 mg/mL extract load) in HeLa cell lysate and 6,173.2 pg/mL (based on a 2.2 mg/mL extract load) in A549 cell lysate.



Cytometric bead array standard curve of MP00155-1, KLF5 Recombinant Matched Antibody Pair, PBS Only. Capture antibody: 83205-3-PBS. Detection antibody: 83205-1-PBS. Standard: Ag15267. Range: 0.625-20 ng/mL



Cytometric bead array standard curve of MP00155-2, KLF5 Recombinant Matched Antibody Pair, PBS Only. Capture antibody: 83205-1-PBS. Detection antibody: 83205-2-PBS. Standard: Ag15267. Range: 1.25-20 ng/mL



Biolayer interferometry (BLI) kinetic assay of 83205-1-PBS against Human KLF5 was performed. The affinity constant is 93.0 pM.