

For Research Use Only

# ATP6 Recombinant antibody, PBS Only

Catalog Number: 83201-3-PBS



## Basic Information

Catalog Number:

83201-3-PBS

Size:

1 mg/ml

Source:

Rabbit

Isotype:

IgG

GenBank Accession Number:

J01415

GeneID (NCBI):

4508

UNIPROT ID:

P00846

Full Name:

ATP synthase 6; ATPase subunit 6

Calculated MW:

25 kDa

Purification Method:

Protein A purification

CloneNo.:

240041B6

## Applications

Tested Applications:

IF/ICC, IF-P, FC (Intra), Indirect ELISA

Species Specificity:

human

## Background Information

ATP synthase, also known as FoF<sub>1</sub> complex, is a critical mitochondrial OXPHOS enzyme involved in the regulation of mitochondrial ATP production and in the maintenance of the mitochondrial membrane potential. It is composed of three components (F<sub>1</sub>, F<sub>o</sub> and the peripheral stalk). F<sub>1</sub>, the soluble catalytic core, is above the membrane, inside the matrix of the mitochondria; consists of 5 different subunits (alpha, beta, gamma, delta, and epsilon); F<sub>o</sub>, comprising the proton channel, is within the membrane; F<sub>o</sub> seems to have nine subunits (a, b, c, d, e, f, g, F<sub>6</sub> and 8). ATP6 is the a subunit of F<sub>o</sub> region.

## Storage

Storage:

Store at -80°C.

The product is shipped with ice packs. Upon receipt, store it immediately at -80°C

Storage Buffer:

PBS Only

For technical support and original validation data for this product please contact:

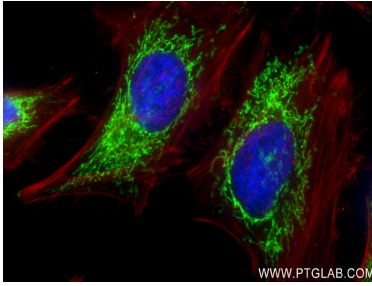
T: 4006900926

E: [Proteintech-CN@ptglab.com](mailto:Proteintech-CN@ptglab.com)

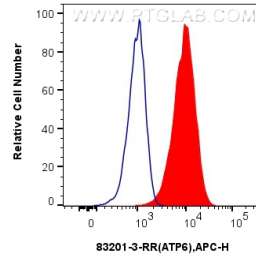
W: [ptgcn.com](http://ptgcn.com)

This product is exclusively available under Proteintech Group brand and is not available to purchase from any other manufacturer.

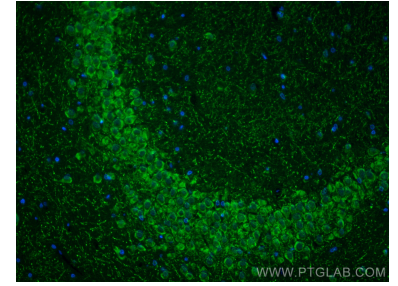
## Selected Validation Data



Immunofluorescent analysis of (4% PFA) fixed HeLa cells using ATP6 antibody (83201-3-RR, Clone: 240041B6 ) at dilution of 1:300 and CoraLite® 488-Conjugated AffiniPure Goat Anti-Mouse IgG(H+L) (SA00013-1), CL594-Phalloidin (red). This data was developed using the same antibody clone with 83201-3-PBS in a different storage buffer formulation.



1x10<sup>6</sup> U2OS cells were intracellularly stained with 0.25 ug ATP6 Recombinant antibody (83201-3-RR, Clone:240041B6) and APC-Conjugated AffiniPure Goat Anti-Rabbit IgG(H+L)(red), or 0.25 ug Isotype Control (blue). Cells were fixed with 4% PFA and permeabilized with Flow Cytometry Perm Buffer (PF00011-C). This data was developed using the same antibody clone with 83201-3-PBS in a different storage buffer formulation.



Immunofluorescent analysis of (4% PFA) fixed paraffin-embedded rat brain tissue using ATP6 antibody (83201-3-RR, Clone: 240041B6 ) at dilution of 1:350 and Multi-rAb CoraLite® Plus 488-Goat Anti-Rabbit Recombinant Secondary Antibody (H+L) (RGAR002). Heat mediated antigen retrieval with Tris-EDTA buffer (pH 9.0). This data was developed using the same antibody clone with 83201-3-PBS in a different storage buffer formulation.