

For Research Use Only

# IGFBP4 Recombinant antibody, PBS Only (Detector)

Catalog Number: 83200-1-PBS



## Basic Information

Catalog Number:

83200-1-PBS

Size:

1mg/ml

Source:

Rabbit

Isotype:

IgG

GenBank Accession Number:

NM\_001552.3

GeneID (NCBI):

3487

UNIPROT ID:

P22692-1

Full Name:

insulin-like growth factor binding protein 4

Calculated MW:

28 kDa

Purification Method:

Protein A purification

CloneNo.:

230543B11

## Applications

Tested Applications:

Cytometric bead array, Sandwich ELISA, Indirect ELISA, Sample test

Species Specificity:

human

## Background Information

### Storage

Storage:

Store at -80°C.

The product is shipped with ice packs. Upon receipt, store it immediately at -80°C

Storage Buffer:

PBS Only

For technical support and original validation data for this product please contact:

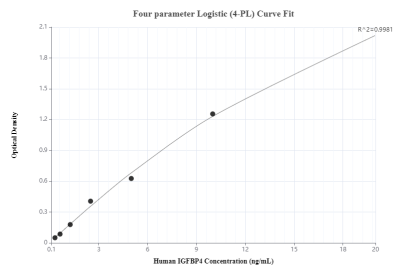
T: 4006900926

E: [Proteintech-CN@ptglab.com](mailto:Proteintech-CN@ptglab.com)

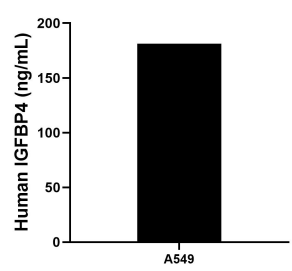
W: [ptgcn.com](http://ptgcn.com)

This product is exclusively available under Proteintech Group brand and is not available to purchase from any other manufacturer.

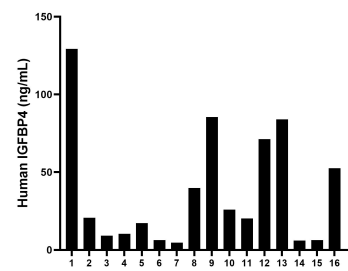
## Selected Validation Data



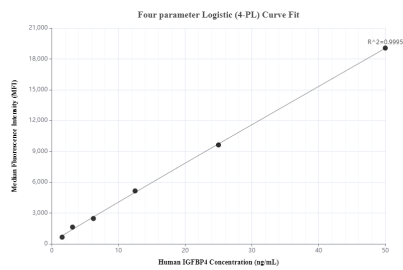
Sandwich ELISA standard curve of MP00279-2, Human IGFBP4 Recombinant Matched Antibody Pair - PBS only. 83200-4-PBS was coated to a plate as the capture antibody and incubated with serial dilutions of standard Eg0825. 83200-1-PBS was HRP conjugated as the detection antibody. Range: 0.313-20 ng/mL.



A549 were cultured in DMEM supplemented with 10% fetal bovine serum, 2.5 mM L-glutamine, 100 U/mL penicillin, and 100  $\mu$ g/mL streptomycin sulfate. The mean IGFBP4 concentration was determined to be 181.3 ng/mL in A549 cell supernatant.



Serum of sixteen individual healthy human donors was measured. The IGFBP4 concentration of detected samples was determined to be 36.9 ng/mL with a range of 4.7 - 129.3 ng/mL.



Cytometric bead array standard curve of MP00279-1, Human IGFBP4 Recombinant Matched Antibody Pair, PBS Only. Capture antibody: 83200-2-PBS. Detection antibody: 83200-1-PBS. Standard: Eg0825. Range: 1.56-50 ng/mL.