

For Research Use Only

SLC6A12 Recombinant antibody, PBS Only (Capture)

Catalog Number: 83195-4-PBS



Basic Information

Catalog Number:

83195-4-PBS

Concentration:

1mg/ml

Source:

Rabbit

Isotype:

IgG

Immunogen Catalog Number:

AG18778

GenBank Accession Number:

BC126215

GeneID (NCBI):

6539

UNIPROT ID:

P48065

Full Name:

solute carrier family 6
(neurotransmitter transporter,
betaine/GABA), member 12

Calculated MW:

614 aa, 69 kDa

Purification Method:

Protein A purification

CloneNo.:

240021D9

Applications

Tested Applications:

Cytometric bead array, Indirect ELISA

Species Specificity:

human

Background Information

Storage

Storage:

Store at -80°C.

The product is shipped with ice packs. Upon receipt, store it immediately at -80°C

Storage Buffer:

PBS Only

For technical support and original validation data for this product please contact:

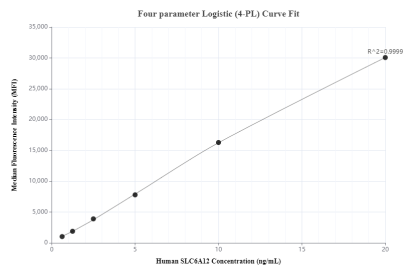
T: 4006900926

E: Proteintech-CN@ptglab.com

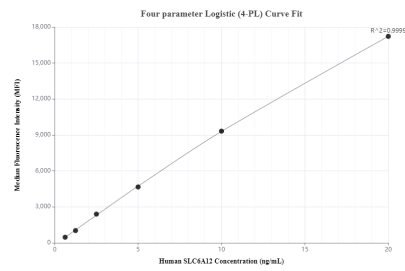
W: ptgcn.com

This product is exclusively available under Proteintech Group brand and is not available to purchase from any other manufacturer.

Selected Validation Data



Cytometric bead array standard curve of MP00289-1, SLC6A12 Recombinant Matched Antibody Pair, PBS Only. Capture antibody: 83195-4-PBS. Detection antibody: 83195-3-PBS. Standard: Ag18778. Range: 0.625-20 ng/mL.



Cytometric bead array standard curve of MP00289-3, SLC6A12 Recombinant Matched Antibody Pair, PBS Only. Capture antibody: 83195-4-PBS. Detection antibody: 83195-1-PBS. Standard: Ag18778. Range: 0.625-20 ng/mL.