

For Research Use Only

SLC22A4 Recombinant antibody, PBS Only (Detector)



Catalog Number: 83192-1-PBS

Basic Information

Catalog Number:

83192-1-PBS

Size:

1 mg/ml

Source:

Rabbit

Isotype:

IgG

Immunogen Catalog Number:

AG3974

GenBank Accession Number:

BC028313

GeneID (NCBI):

6583

UNIPROT ID:

Q9H015

Full Name:

solute carrier family 22 (organic cation/ergothioneine transporter), member 4

Calculated MW:

551 aa, 62 kDa

Purification Method:

Protein A purification

CloneNo.:

240064D5

Applications

Tested Applications:

Cytometric bead array, Indirect ELISA, WB

Species Specificity:

mouse, human

Background Information

Storage

Storage:

Store at -80°C.

The product is shipped with ice packs. Upon receipt, store it immediately at -80°C

Storage Buffer:

PBS Only

For technical support and original validation data for this product please contact:

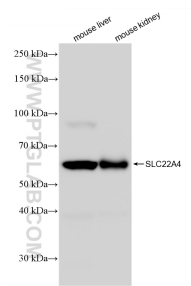
T: 4006900926

E: Proteintech-CN@ptglab.com

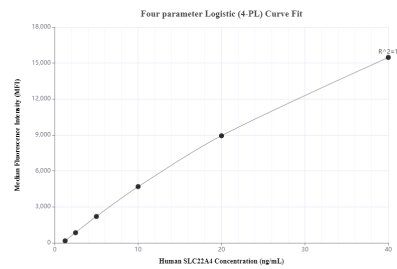
W: ptgcn.com

This product is exclusively available under Proteintech Group brand and is not available to purchase from any other manufacturer.

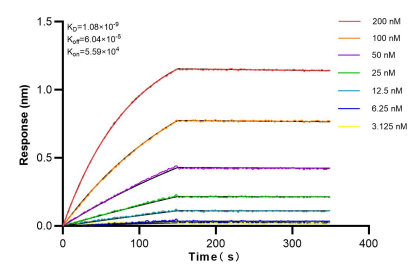
Selected Validation Data



Various lysates were subjected to SDS PAGE followed by western blot with 83192-1-RR (SLC22A4 antibody) at dilution of 1:10000 incubated at room temperature for 1.5 hours. This data was developed using the same antibody clone with 83192-1-PBS in a different storage buffer formulation.



Cytometric bead array standard curve ofMP00292-3, SLC22A4 Recombinant Matched Antibody Pair, PBS Only. Capture antibody: 83192-4-PBS. Detection antibody: 83192-1-PBS. Standard: Ag3974. Range: 1.25-40 ng/mL.



Biolayer interferometry (BLI) kinetic assays of 83192-1-RR against Human SLC22A4 were performed. The affinity constant is 1.08 nM.