

For Research Use Only

# SORBS2 Recombinant antibody, PBS Only (Capture)



Catalog Number: 83189-1-PBS

## Basic Information

Catalog Number: 83189-1-PBS	GenBank Accession Number: BC011883	Purification Method: Protein A purification
Size: 1mg/ml	GeneID (NCBI): 8470	CloneNo.: 240023A11
Source: Rabbit	UNIPROT ID: O94875	
Isotype: IgG	Full Name: sorbin and SH3 domain containing 2	
Immunogen Catalog Number: AG20041	Calculated MW: 1100 aa, 124 kDa	

## Applications

**Tested Applications:**  
Cytometric bead array, Sandwich ELISA, Indirect ELISA, Sample test

**Species Specificity:**  
human

## Background Information

### Storage

**Storage:**  
Store at -80°C.  
**The product is shipped with ice packs. Upon receipt, store it immediately at -80°C**

**Storage Buffer:**  
PBS Only

For technical support and original validation data for this product please contact:

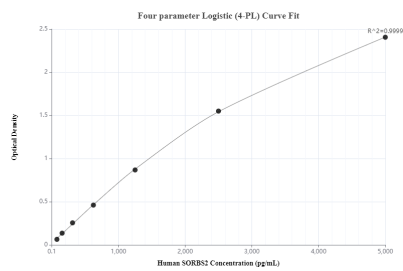
T: 4006900926

E: [Proteintech-CN@ptglab.com](mailto:Proteintech-CN@ptglab.com)

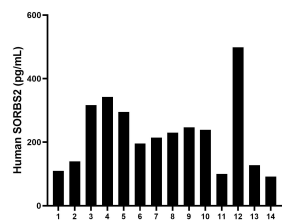
W: [ptgcn.com](http://ptgcn.com)

**This product is exclusively available under Proteintech Group brand and is not available to purchase from any other manufacturer.**

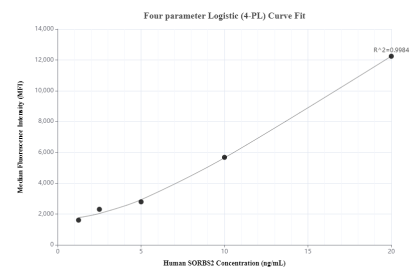
## Selected Validation Data



Sandwich ELISA standard curve of MP00272-1, Human SORBS2 Monoclonal Matched Antibody Pair - PBS only. 83189-1-PBS was coated to a plate as the capture antibody and incubated with serial dilutions of standard Ag20041. 83189-2-PBS was HRP conjugated as the detection antibody. Range: 78.125-5000 pg/mL.



Serum of sixteen individual healthy human donors were measured. The human SORBS2 concentration of detected samples was determined to be 224.9 pg/mL with a range of ND - 498.9 pg/mL.



Cytometric bead array standard curve of MP00272-1, SORBS2 Recombinant Matched Antibody Pair, PBS Only. Capture antibody: 83189-1-PBS. Detection antibody: 83189-2-PBS. Standard: Ag20041. Range: 1.25-20 ng/mL.